

Regional Syndromic Surveillance Bi-Weekly Report

Wednesday February 12th, 2020 - Tuesday February 25th, 2019

Health Unit Coverage = KFL&A, HPECHU, LGL

Kingston, Frontenac & Lennox and
Addington Public Health Knowledge
Management Team

ACES Hospital Emergency Department (ED) Activity

Summary: Overall emergency room visit volume was stable across all regional health unit jurisdictions compared to the previous two week period of January 29th through February 11th. (KFL&A: 4674 vs. 4713, HPE: 4007 vs. 4058, LGL: 4120 vs. 4048).

Info. items: 1) KFL&A PH has been notified of 57 cases of influenza A and 6 influenza B cases for the 2019-2020 season. ED visit and admission volumes for respiratory related issues were at low levels this past week. 2) Provincially, visits continued their up-and-down trend with admissions continuing to decrease. Influenza circulation is trending down but continued focus should remain on influenza prevention strategies (see page 5 and visit [ILI mapper](#) for more updates). 3) Nationally, influenza activity remained high but many indicators did decreased slightly. Influenza A(H3N2), A(H1N1) and B are still currently co-circulating. Early interim estimates of vaccine effectiveness (VE) indicates that the 2019/2020 influenza vaccine has provided substantial protection against medically attended influenza illness so far this season. VE was estimated to be 58% overall, 44% for A(H1N1), 62% for A(H3N2), and 69% for influenza B (from the Sentinel Practitioner Surveillance Network).

KFL&A Respiratory: There is currently 1 RSV outbreak, 1 parainfluenza + RSV outbreak, and 1 enterovirus + rhinovirus outbreak occurring in local long-term care/retirement facilities.

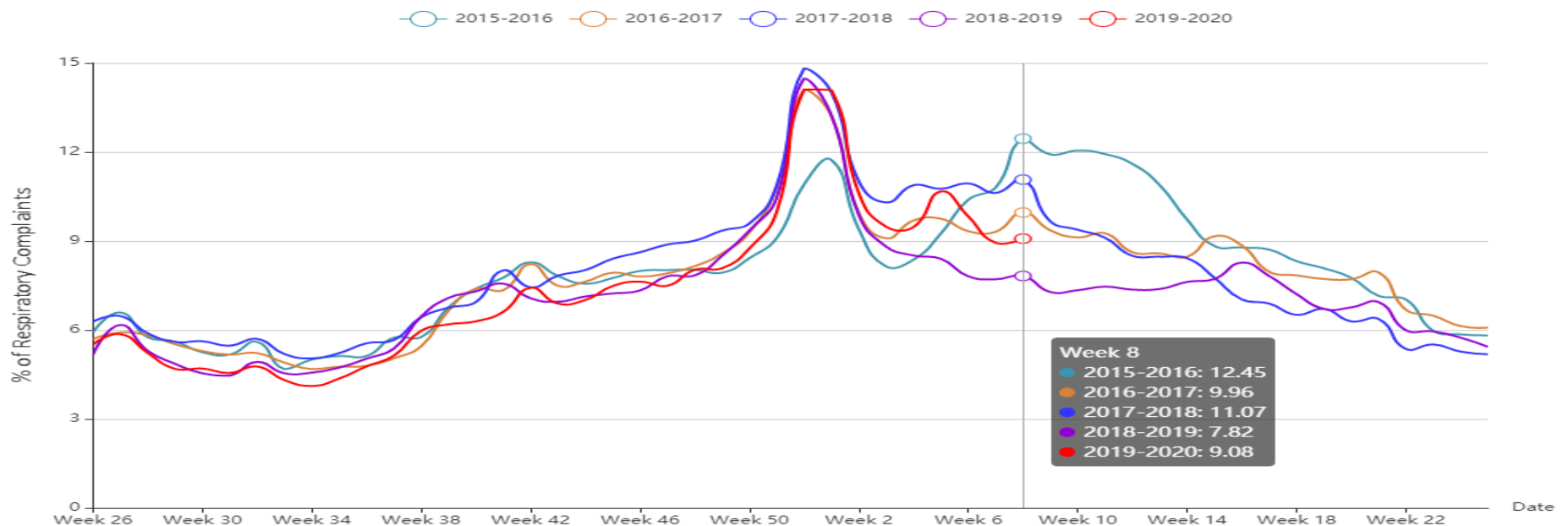
KFL&A Gastrointestinal: There is currently 1 enteric outbreak of unknown origin and 1 norovirus outbreak occurring in local long-term care/retirement facilities.

Local Admissions of Interest

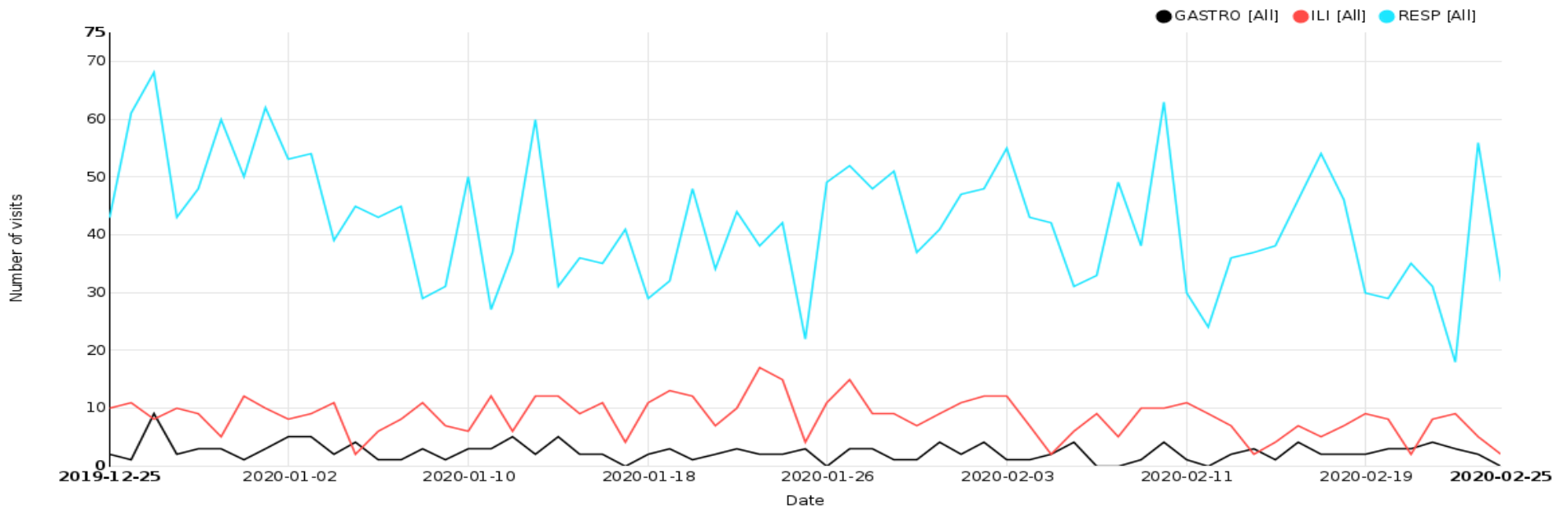
Date	Hospital	Reason for Admission
18/2/2020	KGH	INFLUENZA
18/2/2020	KGH	ACUTE BRONCHIOLITIS
20/2/2020	KGH	BRONCHIOLITIS
21/2/2020	KGH	HYPOXIC RESPIRATORY FAILURE/INFLUENZA
25/2/2020	KGH	POLY DRUG OVERDOSE
25/2/2020	KGH	PNEUMONIA VS. INFLUENZA

NOTE: Further details can be obtained by contacting KFL&A PHI staff at adam.vandijk@kflaph.ca or 613-549-1232 x1510 All feedback is welcome and appreciated.

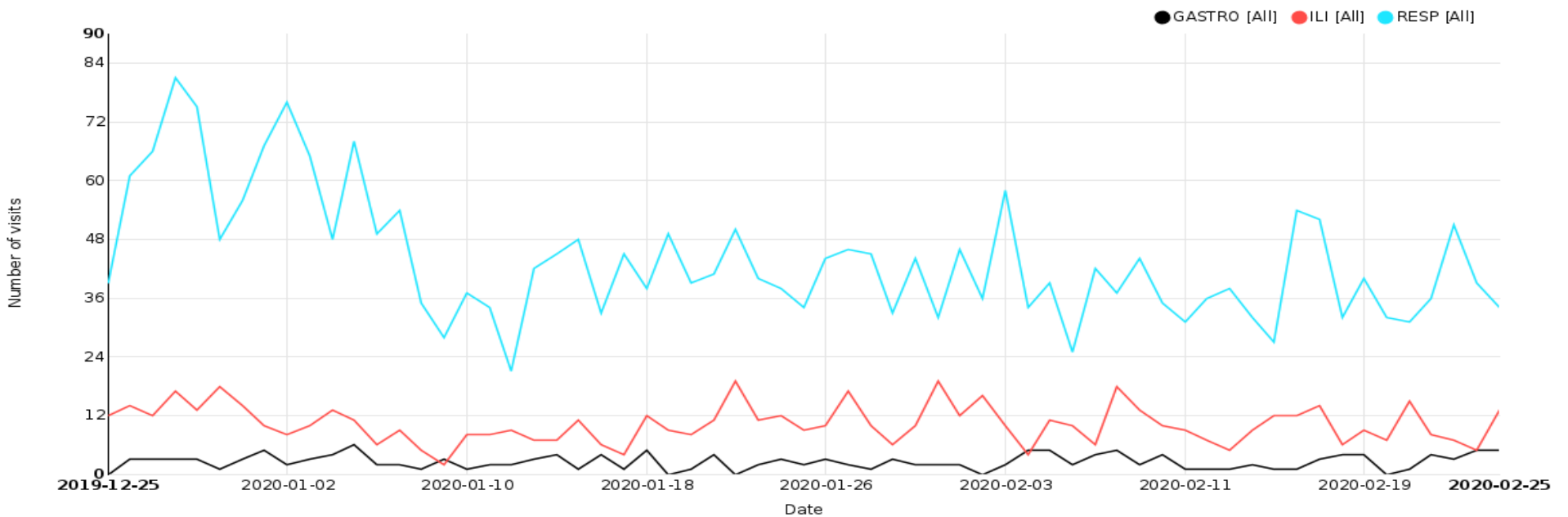
ED respiratory visits curve for Ontario hospitals providing data to the ACES system with historical yearly comparisons



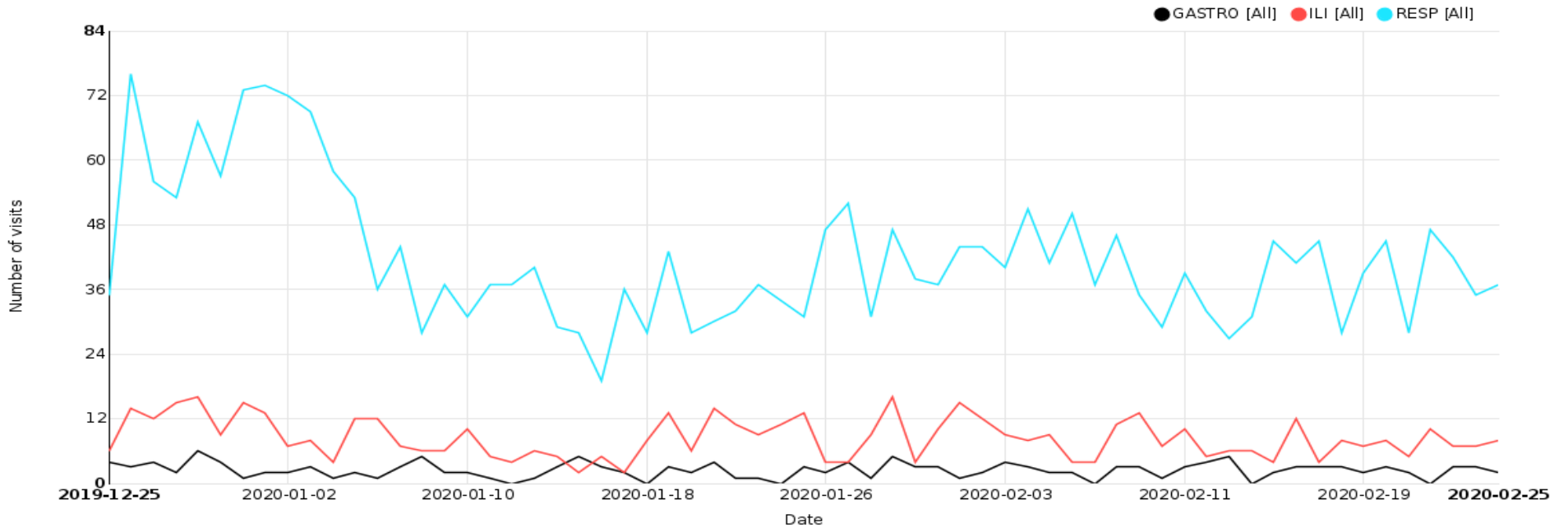
Respiratory, Gastrointestinal and Influenza-Like Illness/Fever ED Visits for KFL&A Health Unit



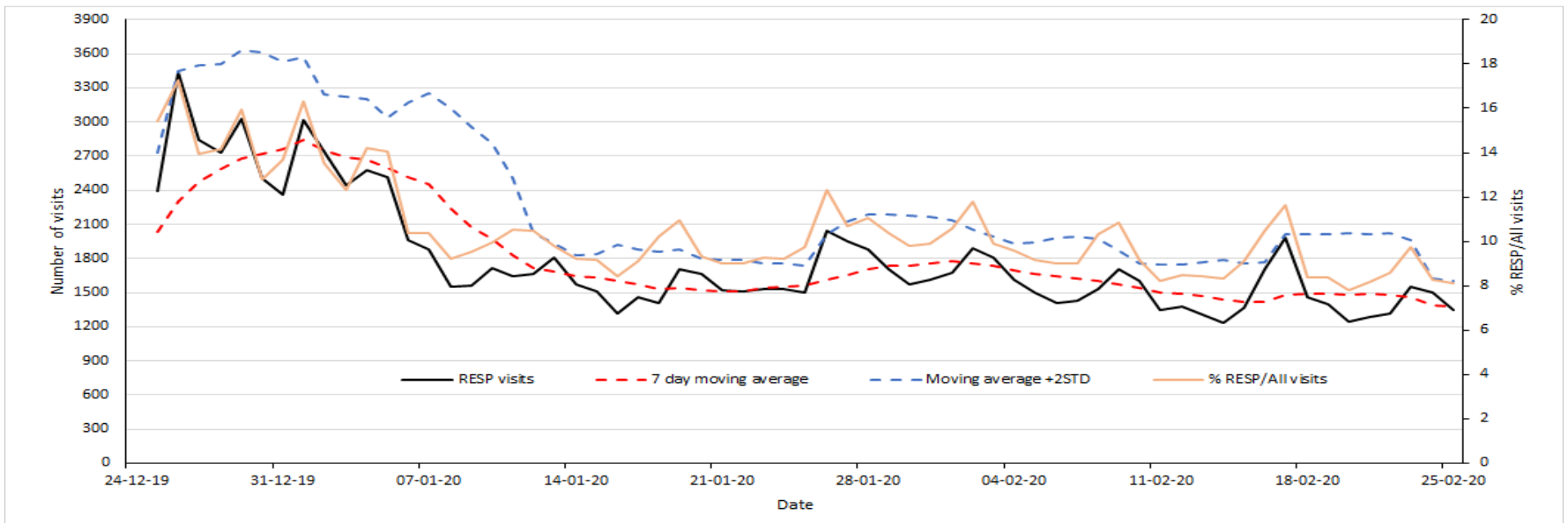
Respiratory, Gastrointestinal and Influenza-Like Illness/Fever ED Visits for HPE Health Unit



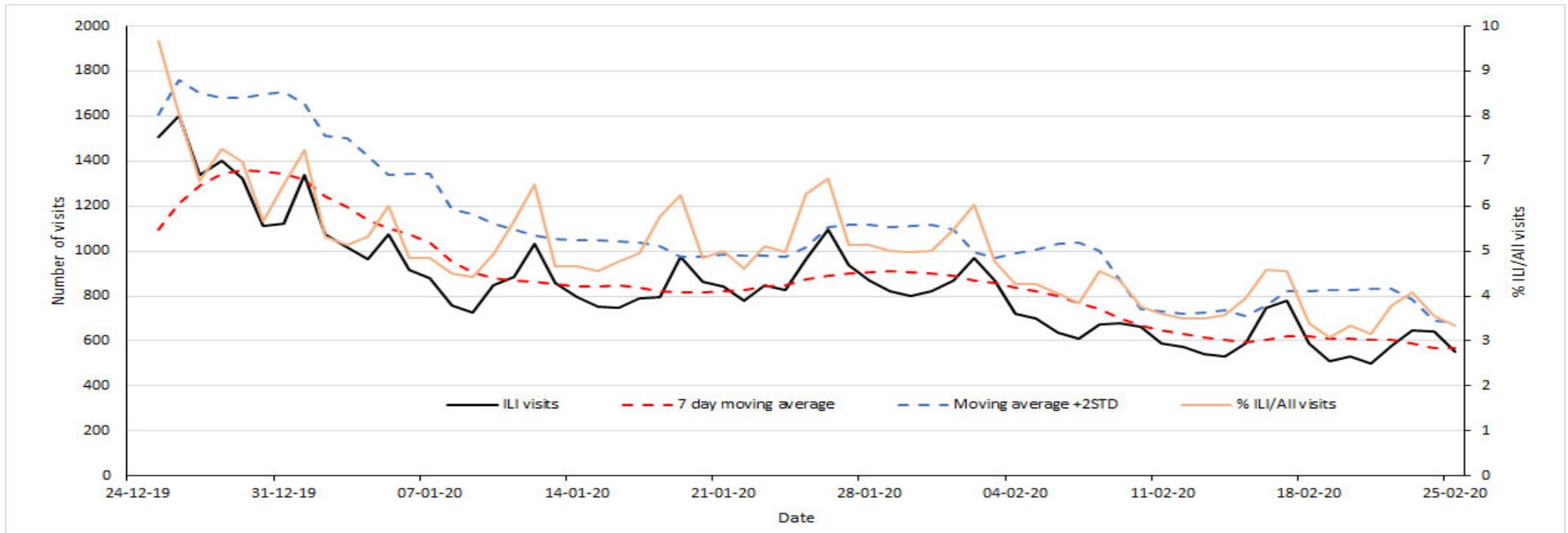
Respiratory, Gastrointestinal and Influenza-Like Illness/Fever ED Visits for LGL Health Unit



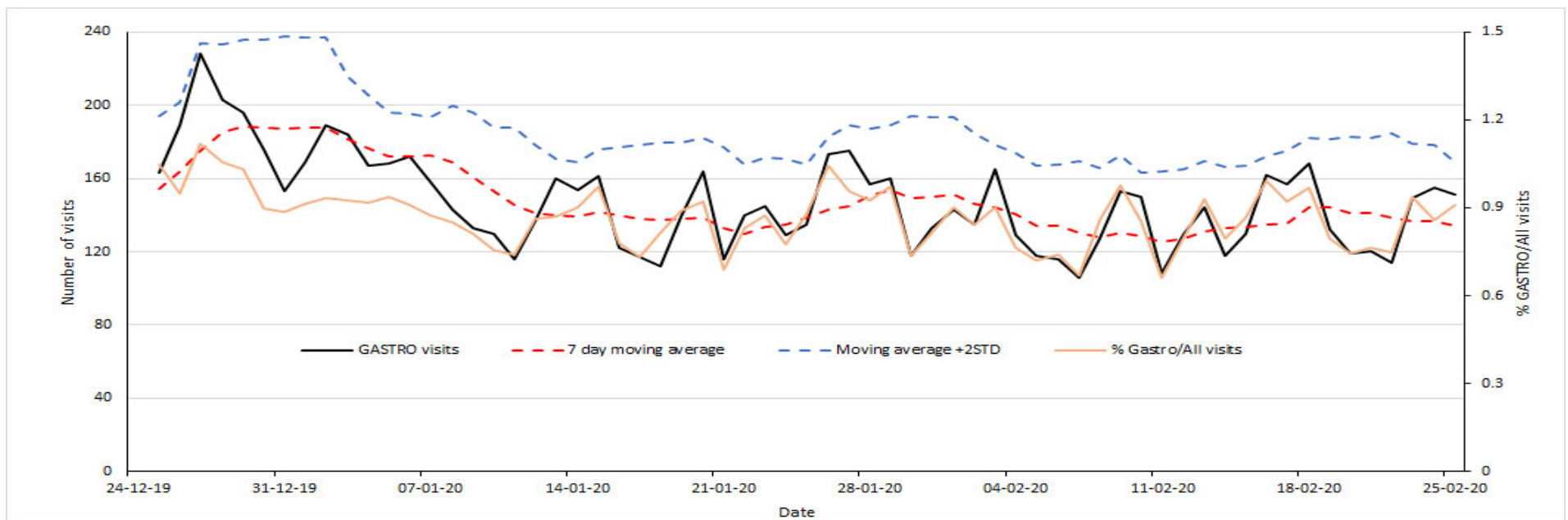
Respiratory ED Visits to Participating Ontario Hospitals



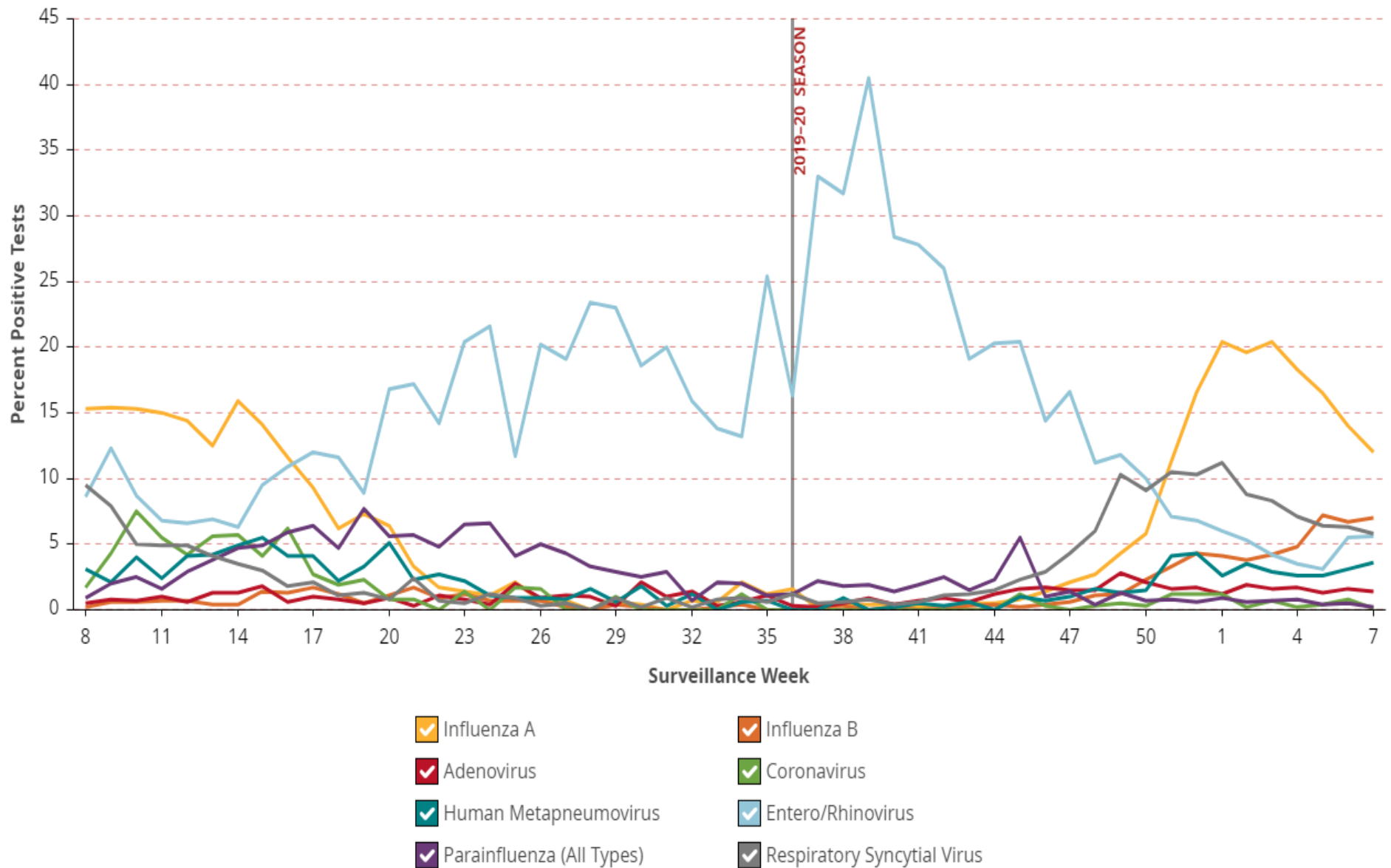
Influenza-Like Illness/Fever ED Visits to Participating Ontario Hospitals



Gastrointestinal ED Visits to Participating Ontario Hospitals



Percent of Respiratory Viral Pathogen(s) Detected Among Specimens Tested for that Pathogen by all Testing Methods by Surveillance Week



*Source: Ontario Respiratory Pathogen Bulletin, Public Health Ontario (with data obtained from the Public Health Agency of Canada's Respiratory Virus Detection tables)
Please review section 10 of the weekly pdf report for further information on the data sources used for the Ontario Respiratory Pathogen Bulletin.