

Regional Syndromic Surveillance Bi-Weekly Report

Wednesday January 29th, 2020 - Tuesday February 11th, 2019

Health Unit Coverage = KFL&A, HPECHU, LGL

Kingston, Frontenac & Lennox and
Addington Public Health Knowledge
Management Team

ACES Hospital Emergency Department (ED) Activity

Summary: Overall emergency room visit volume decreased in KFL&A and remained stable in both the HPE and LGL health unit jurisdictions compared to the previous two week period of January 15th through January 28th. (KFL&A: 4713 vs. 5325, HPE: 4058 vs. 4038, LGL: 4048 vs. 4110).

Info. items: 1) KFL&A PH has been notified of 42 cases of influenza A and 5 influenza B cases for the 2019-2020 season. ED visit and admission volumes for respiratory related issues were at moderate levels this past week. 2) Provincially, visits and admissions have hit a plateau and still remain relatively high. With influenza still circulating at elevated levels, continued focus should remain on influenza prevention strategies such as proper hand washing techniques and cough etiquette (see page 5 and visit [ILI mapper](#) for more updates). 3) Nationally, influenza activity remained high last week, with many indicators increasing compared to the week prior. Influenza A(H3N2), A(H1N1) and B are still currently co-circulating, with influenza A(H1N1) currently the predominant strain this season. Influenza B detections are still higher than expected for this time of year. The highest hospitalization rates due to influenza are among children under 5, and adults over the age of 65.

KFL&A Respiratory: There are currently 2 parainfluenza outbreaks and 1 influenza A outbreak occurring in local long-term care/retirement facilities.

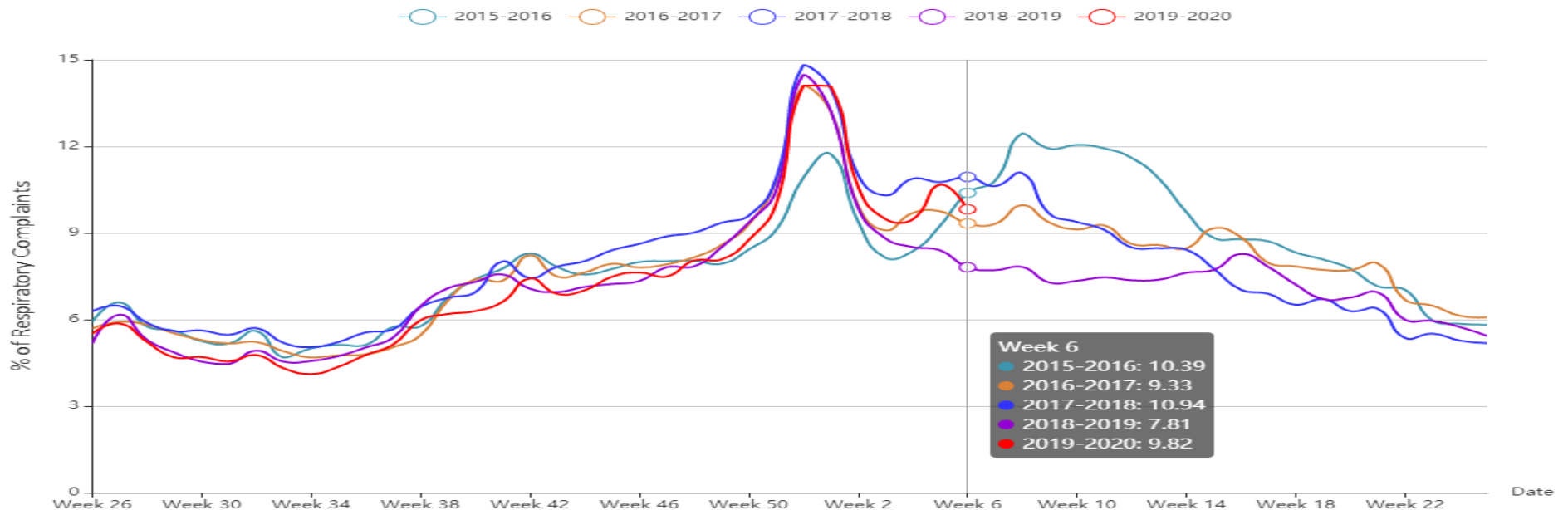
KFL&A Gastrointestinal: There are currently 2 enteric outbreaks, both of unknown origin, occurring in local long-term care/retirement facilities.

Local Admissions of Interest

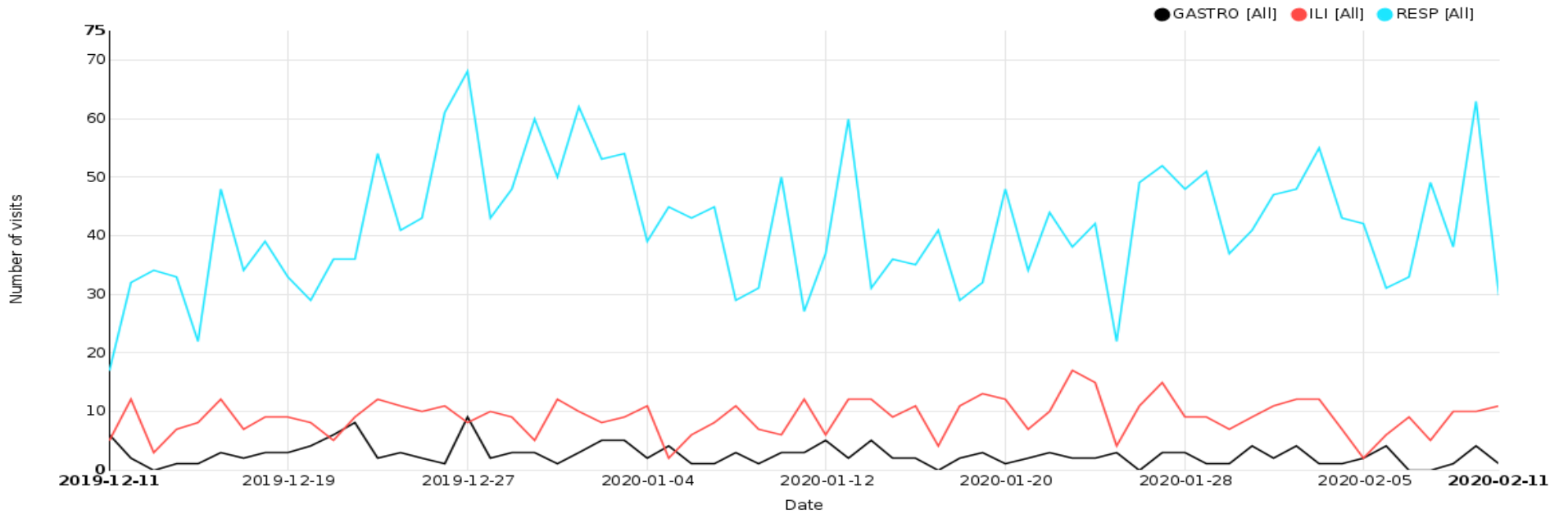
Date	Hospital	Reason for Admission
31/1/2020	KGH	INFLUENZA VS. PNEUMONIA
31/1/2020	KGH	INFLUENZA
31/1/2020	KGH	VIRAL MENINGITIS/ENCEPHALITIS
05/2/2020	KGH	ACUTE BRONCHIOLITIS
05/2/2020	KGH	SUSPECTED RESPIRATORY INFECTION AND OPIOID ABUSE
09/2/2020	KGH	RESPIRATORY SYNCYTIAL VIRUS

NOTE: Further details can be obtained by contacting KFL&A PHI staff at adam.vandijk@kflaph.ca or 613-549-1232 x1510 All feedback is welcome and appreciated.

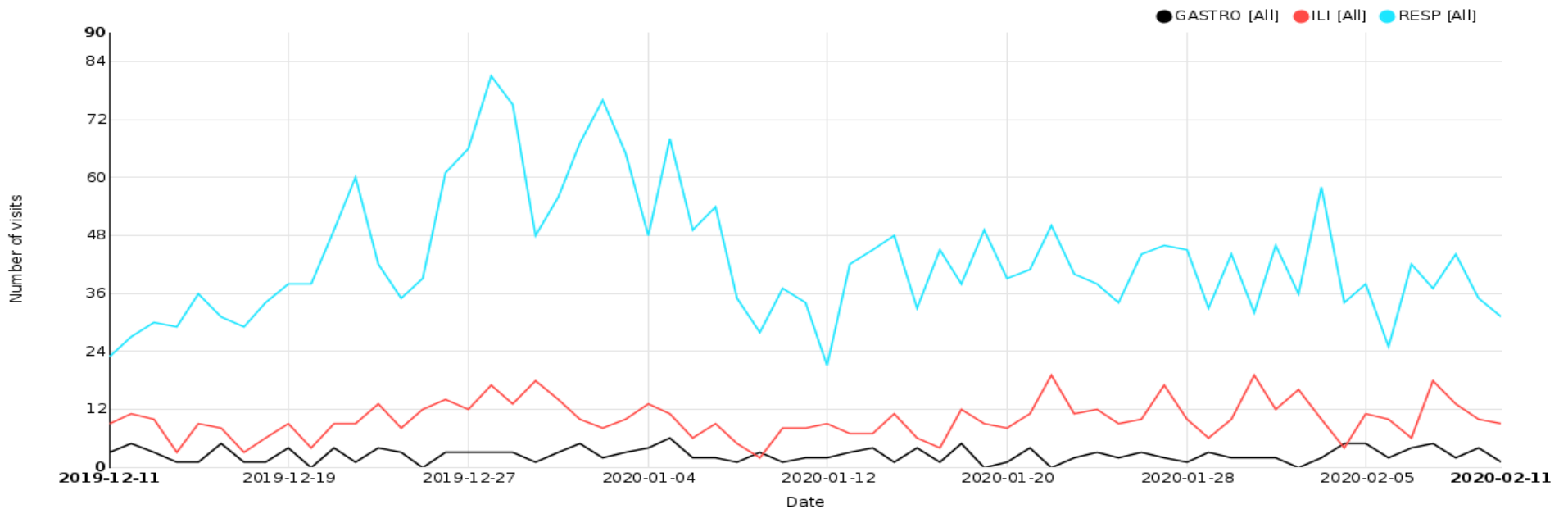
ED respiratory visits curve for Ontario hospitals providing data to the ACES system with historical yearly comparisons



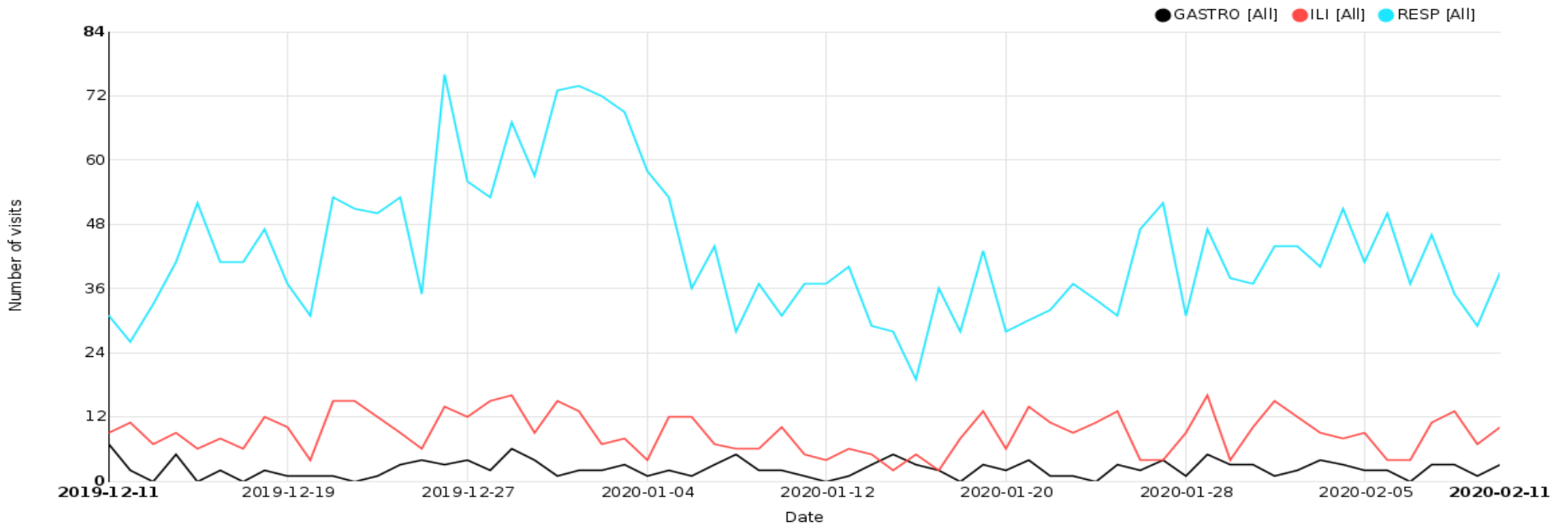
Respiratory, Gastrointestinal and Influenza-Like Illness/Fever ED Visits for KFL&A Health Unit



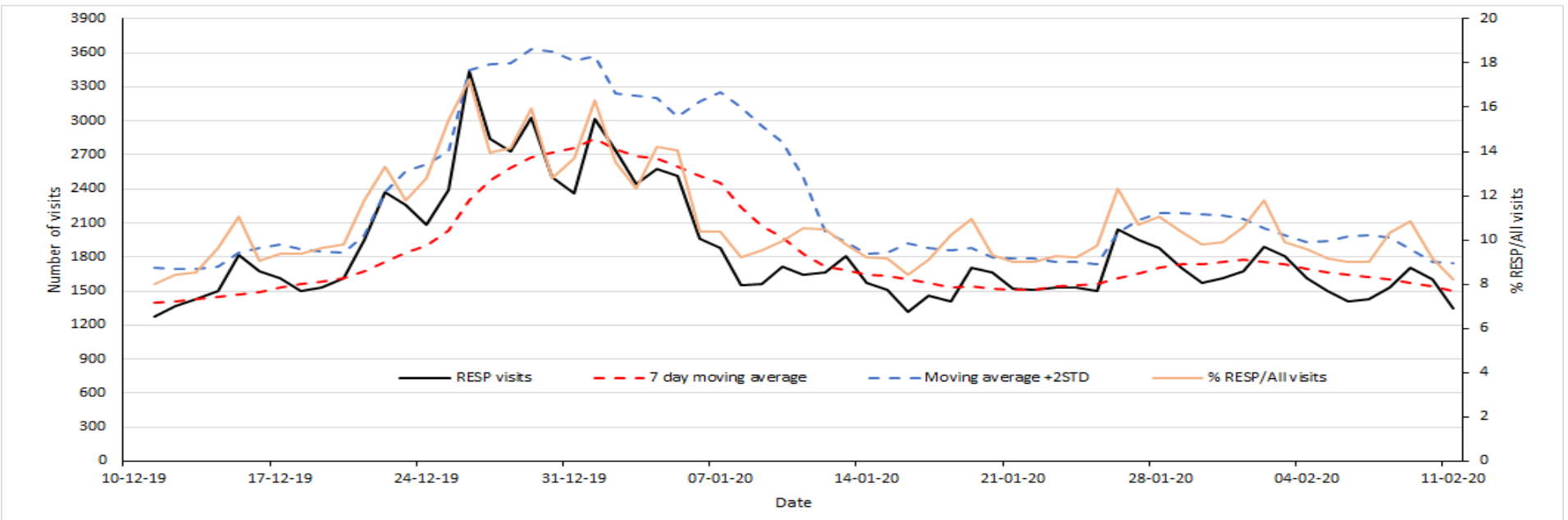
Respiratory, Gastrointestinal and Influenza-Like Illness/Fever ED Visits for HPE Health Unit



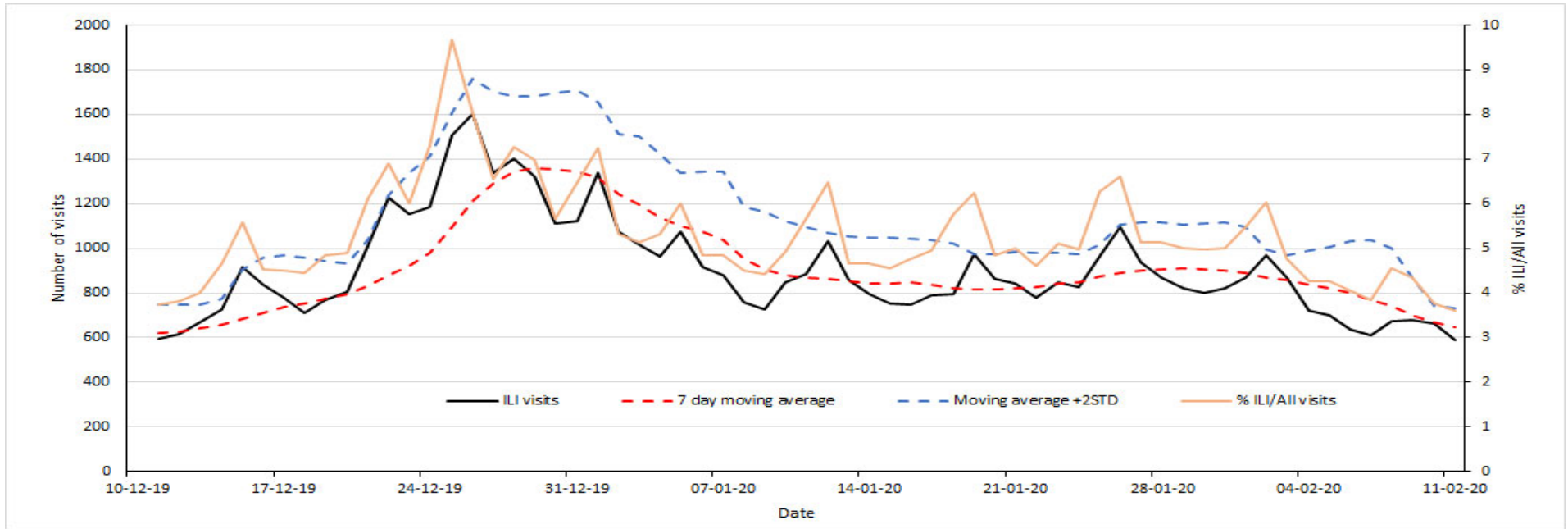
Respiratory, Gastrointestinal and Influenza-Like Illness/Fever ED Visits for LGL Health Unit



Respiratory ED Visits to Participating Ontario Hospitals



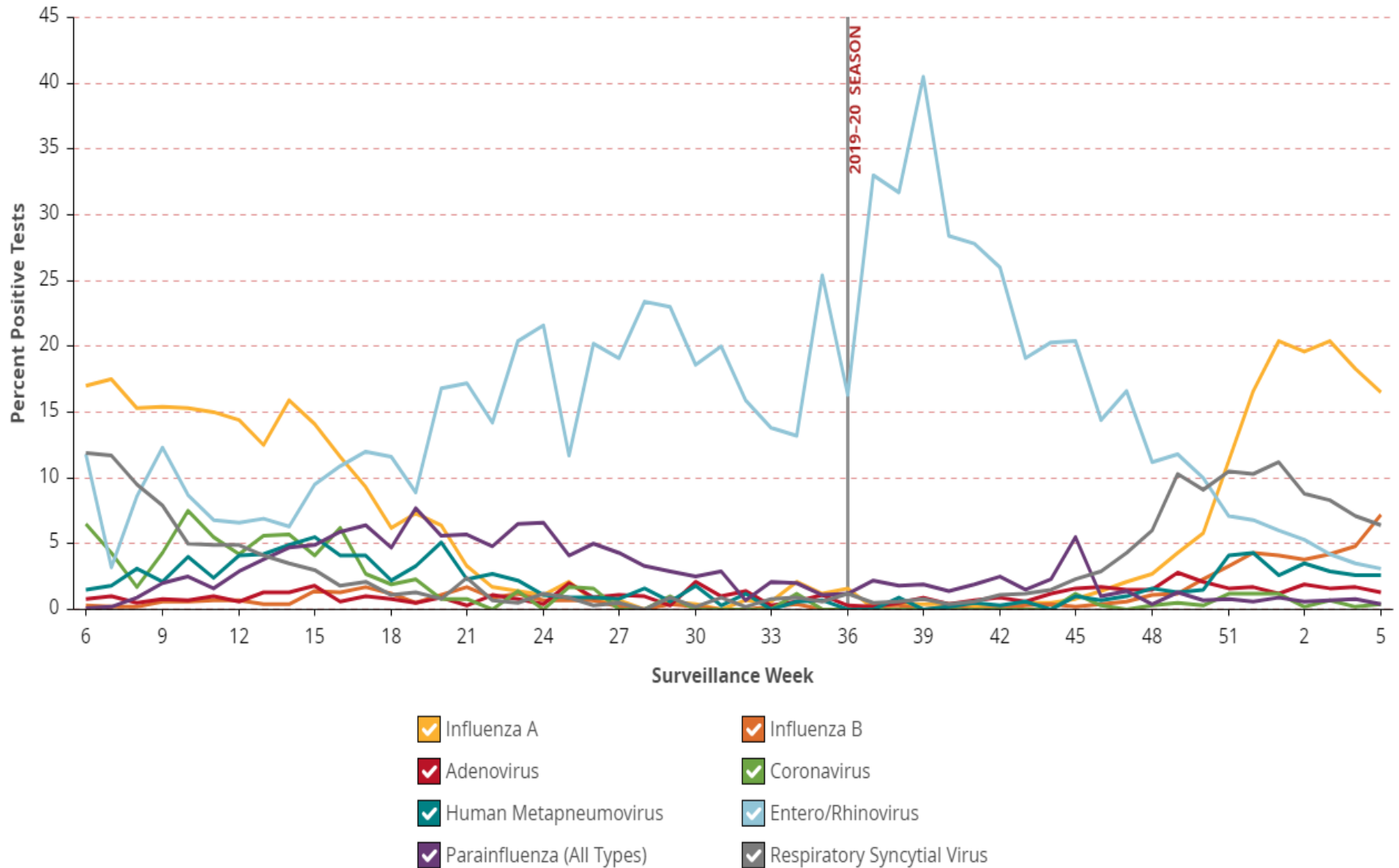
Influenza-Like Illness/Fever ED Visits to Participating Ontario Hospitals



Gastrointestinal ED Visits to Participating Ontario Hospitals



Percent of Respiratory Viral Pathogen(s) Detected Among Specimens Tested for that Pathogen by all Testing Methods by Surveillance Week



*Source: Ontario Respiratory Pathogen Bulletin, Public Health Ontario (with data obtained from the Public Health Agency of Canada's Respiratory Virus Detection tables)
Please review section 10 of the weekly pdf report for further information on the data sources used in the Ontario Respiratory Pathogen Bulletin.