

Regional Syndromic Surveillance Bi-Weekly Report

Wednesday January 15th, 2020 - Tuesday January 28th, 2019

Health Unit Coverage = KFL&A, HPECHU, LGL

Kingston, Frontenac & Lennox and
Addington Public Health Knowledge
Management Team

ACES Hospital Emergency Department (ED) Activity

Summary: Overall emergency room visit volume decreased in all regional health unit jurisdictions compared to the previous two week period of January 1st through January 14th. (KFL&A: 5325 vs. 5634, HPE: 4038 vs. 4276, LGL: 4110 vs. 4553).

Info. items: 1) KFL&A PH has been notified of 35 cases of influenza A and 2 influenza B cases for the 2019-2020 season. ED visit and admission volumes for respiratory related issues and admissions continue to drop across the region. 2) Provincially, visits and admissions also continue their downward trend, however, caution should be used when interpreting this data as influenza is still circulating at elevated levels (see page 5 and visit [ILI mapper](#) for more updates). 3) Nationally, influenza activity decreased or remained the same across many indicators last week. Influenza A(H3N2), A(H1N1) and B are still currently co-circulating, with influenza A(H1N1) recently overtaking A(H3N2) as the predominant strain this season. Influenza B detections are still higher than expected for this time of year. The highest hospitalization rates due to influenza are among children under 5, and adults over the age of 65.

KFL&A Respiratory: There is currently one outbreak involving 2 separate viruses, RSV and coronavirus (NOT the 2019 novel version) occurring in a local long-term care/retirement facility.

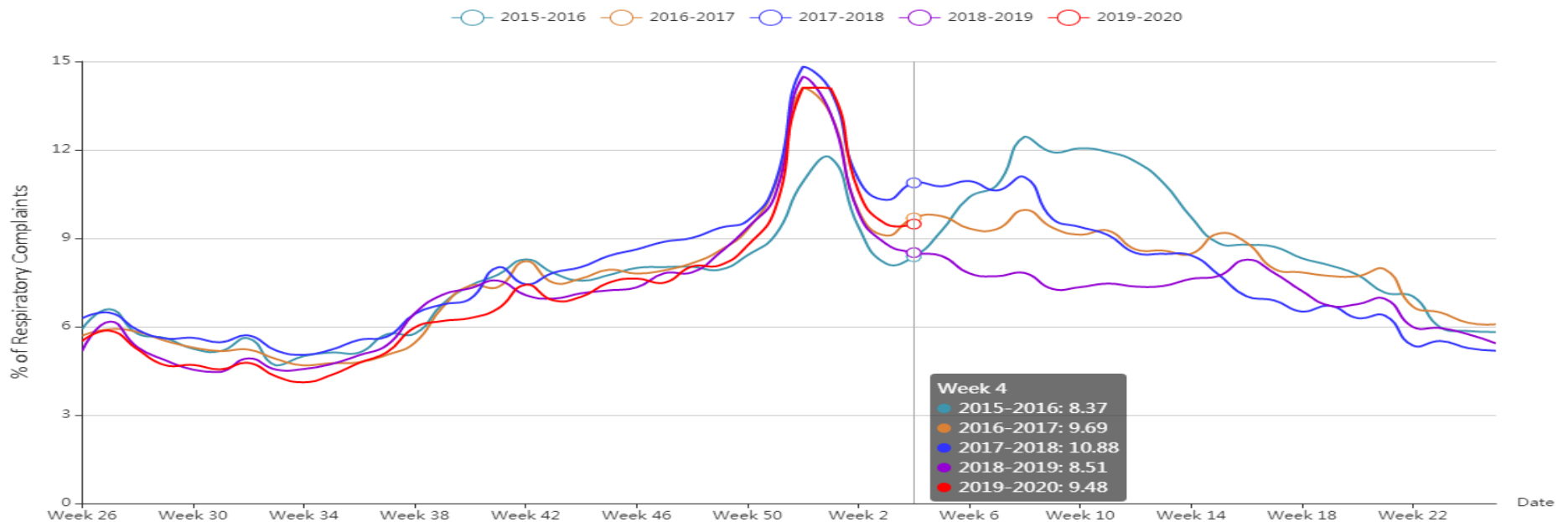
KFL&A Gastrointestinal: There is currently one norovirus and one enteric outbreak of unknown origin occurring in local long-term care/retirement facilities.

Local Admissions of Interest

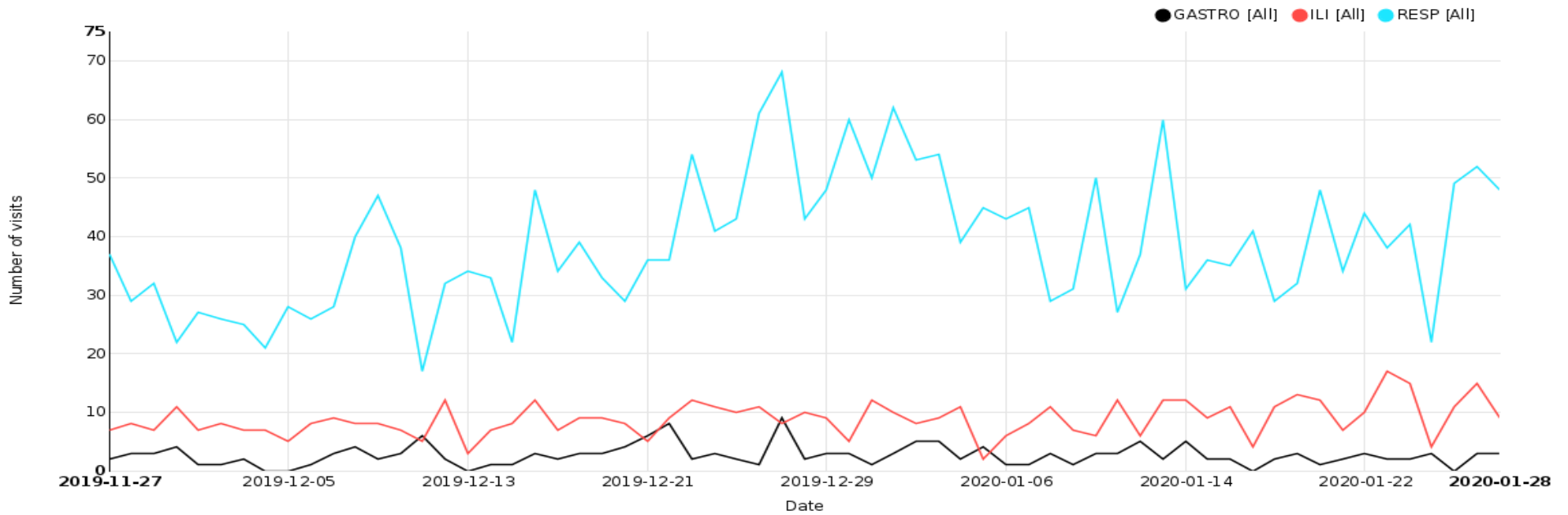
Date	Hospital	Reason for Admission
18/1/2020	KGH	CROUP
21/1/2020	KGH	CANNABINOID HYPEREMESIS
21/1/2020	KGH	CROUP
24/1/2020	KGH	BRONCHIOLITIS VS. PERTUSSIS
26/1/2020	KGH	PNEUMOSEPSIS
26/1/2020	KGH	GASTROENTERITIS

NOTE: Further details can be obtained by contacting KFL&A PHI staff at adam.vandijk@kflaph.ca or 613-549-1232 x1510 All feedback is welcome and appreciated.

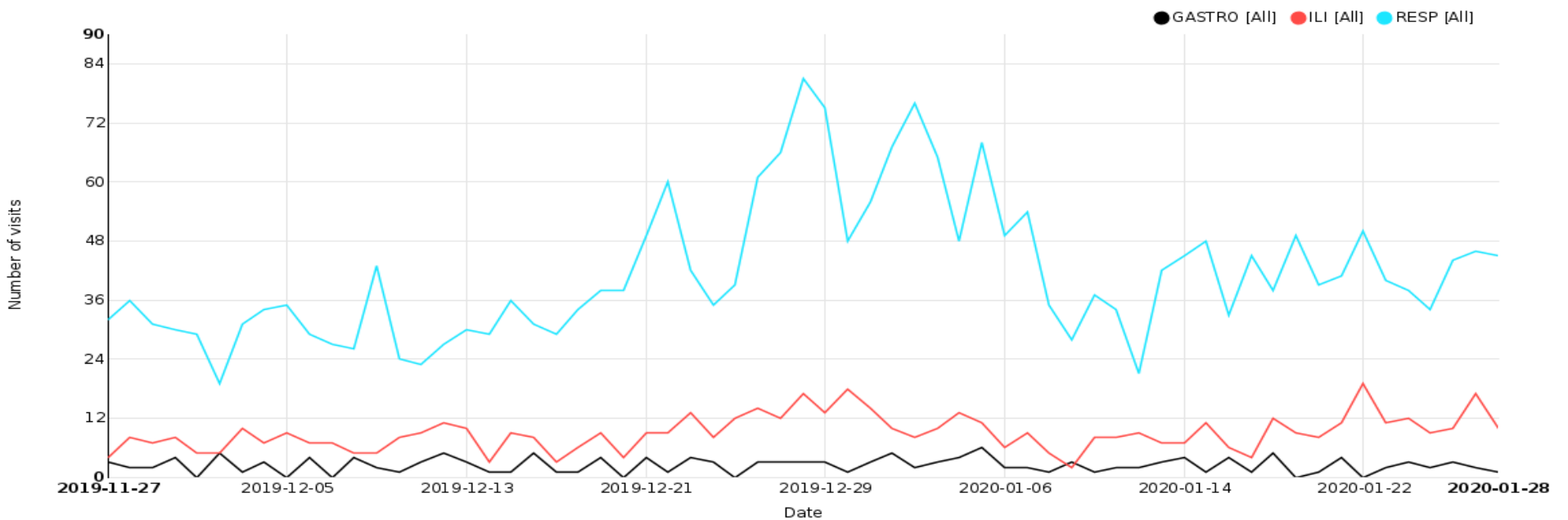
ED respiratory visits curve for Ontario hospitals providing data to the ACES system with historical yearly comparisons



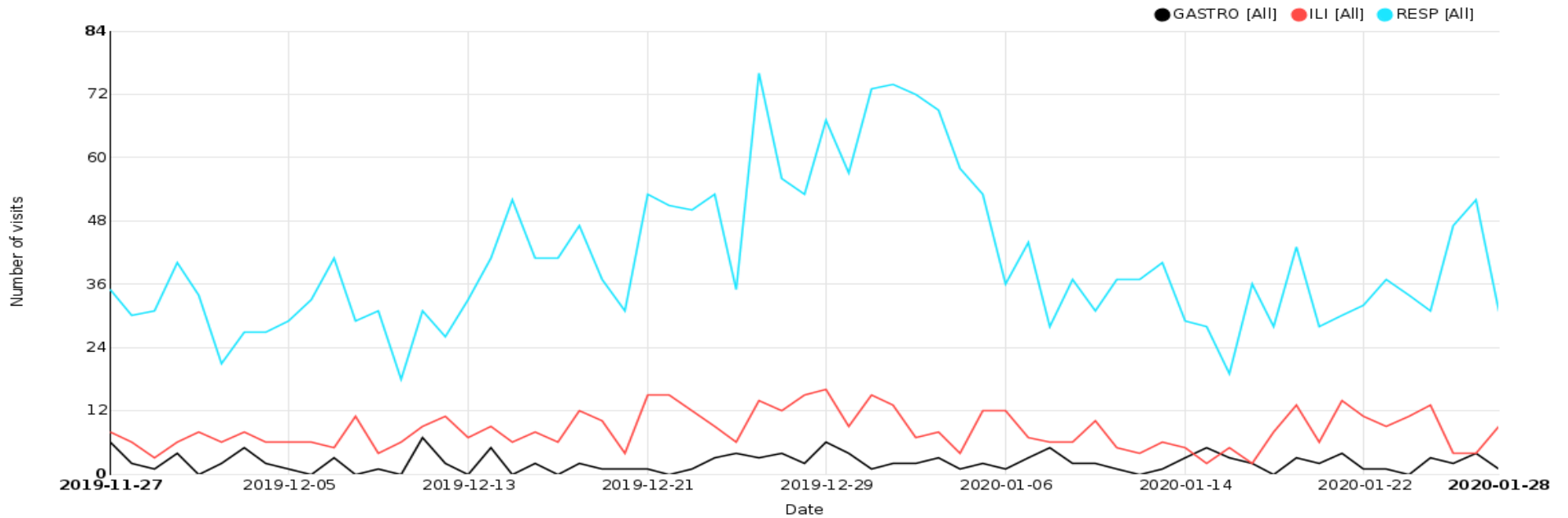
Respiratory, Gastrointestinal and Influenza-Like Illness/Fever ED Visits for KFL&A Health Unit



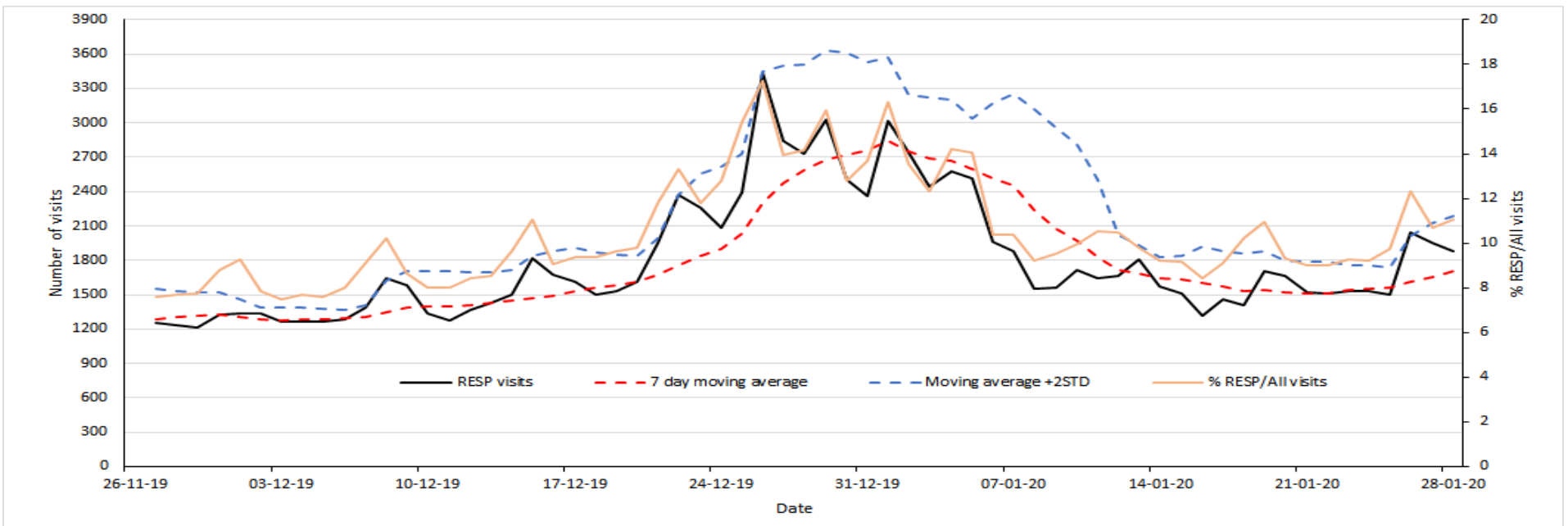
Respiratory, Gastrointestinal and Influenza-Like Illness/Fever ED Visits for HPE Health Unit



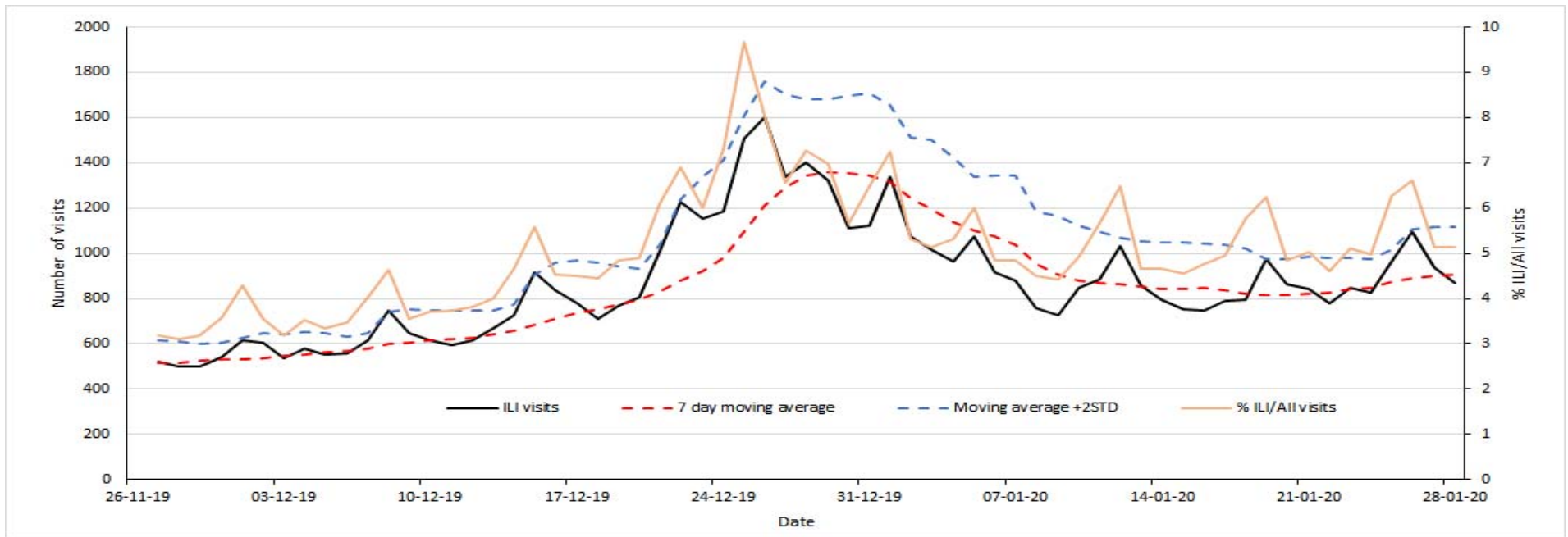
Respiratory, Gastrointestinal and Influenza-Like Illness/Fever ED Visits for LGL Health Unit



Respiratory ED Visits to Participating Ontario Hospitals



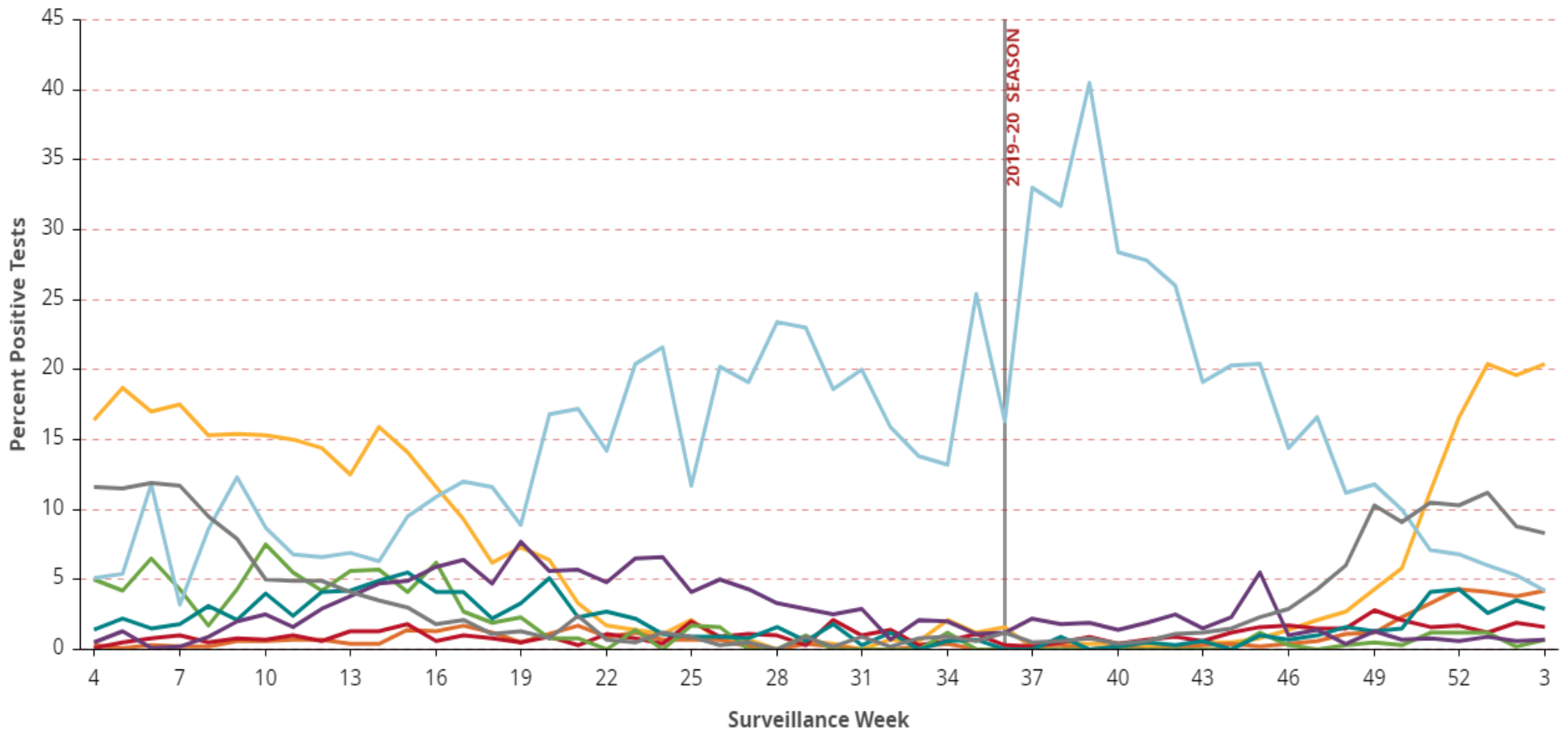
Influenza-Like Illness/Fever ED Visits to Participating Ontario Hospitals



Gastrointestinal ED Visits to Participating Ontario Hospitals



Percent of Respiratory Viral Pathogen(s) Detected Among Specimens Tested for that Pathogen by all Testing Methods by Surveillance Week



- ✓ Influenza A
- ✓ Adenovirus
- ✓ Human Metapneumovirus
- ✓ Parainfluenza (All Types)
- ✓ Influenza B
- ✓ Coronavirus
- ✓ Enterovirus/Rhinovirus
- ✓ Respiratory Syncytial Virus

*Source: Ontario Respiratory Pathogen Bulletin, Public Health Ontario (with data obtained from the Public Health Agency of Canada's Respiratory Virus Detection tables)
Please review section 10 of the weekly pdf report for further information on the data sources used in the Ontario Respiratory Pathogen Bulletin.