

Regional Syndromic Surveillance Bi-Weekly Report

Wednesday November 6th, 2019 - Tuesday November 19th, 2019

Health Unit Coverage = KFL&A, HPECHU, LGL

Kingston, Frontenac & Lennox and
Addington Public Health Knowledge
Management Team

ACES Hospital Emergency Department (ED) Activity

Summary: Overall emergency room visit volume decreased across all regional health unit jurisdictions compared to the previous two week period of October 23rd through November 5th. (KFL&A: 5336 vs. 5675, HPE: 3935 vs. 4336, LGL: 4295 vs. 4828).

Info. items: 1) Tick related ED visits across the region over the past two weeks were minimal compared to what was seen in October. The cold weather however does not kill ticks, they simply hide and go dormant. Some adult ticks can also stay active so vigilance is still required when visiting wooded and grassy areas. 2) KFL&A PH has had one lab confirmed case of influenza A for the 2019-2020 season. More cases will inevitably start coming in as we move deeper into November based on historical data. 3) Provincially, ED visits and admissions for respiratory related complaints are currently stable and within expected averages (see graph below and visit [ILI mapper](#) for more updates). Rhinovirus, is still the most common respiratory virus currently circulating (see page 5). Based on historic data, as rhinovirus tapers off, both RSV and influenza positivity starts rising. Keep focussing efforts on influenza vaccinations, hand hygiene strategies and cough etiquette.

KFL&A Respiratory: There are currently no respiratory outbreaks occurring in any local long-term care/retirement facilities.

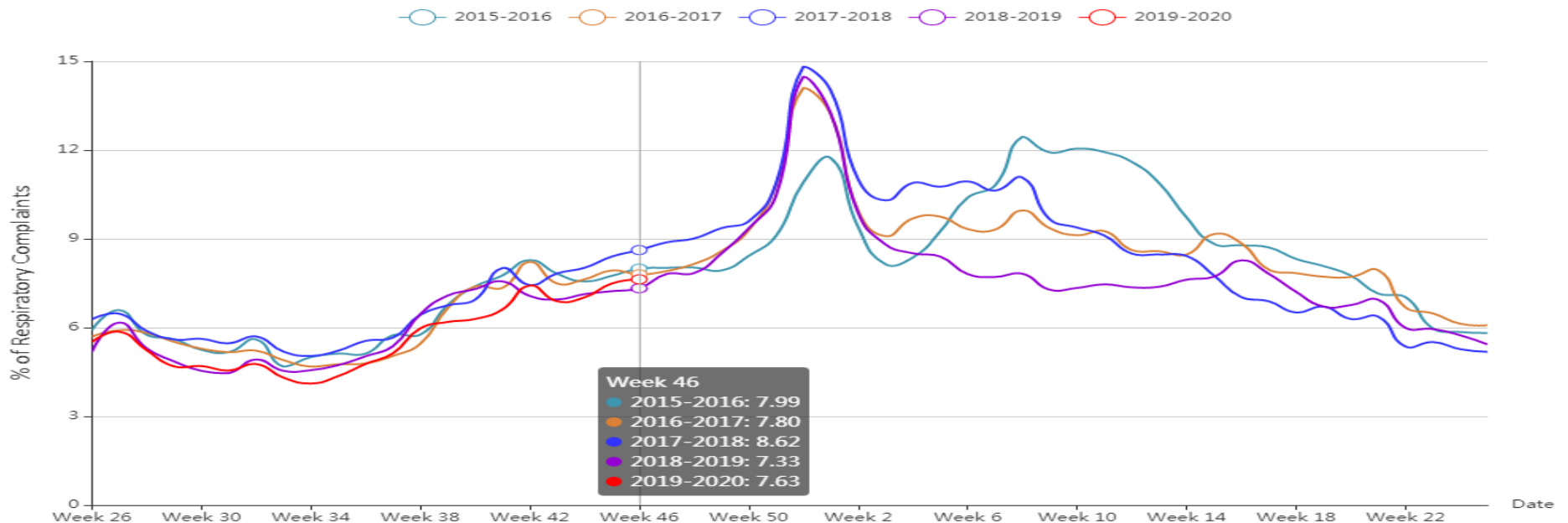
KFL&A Gastrointestinal: There are currently no enteric outbreaks occurring in any local long-term care/retirement facilities.

Local Admissions of Interest

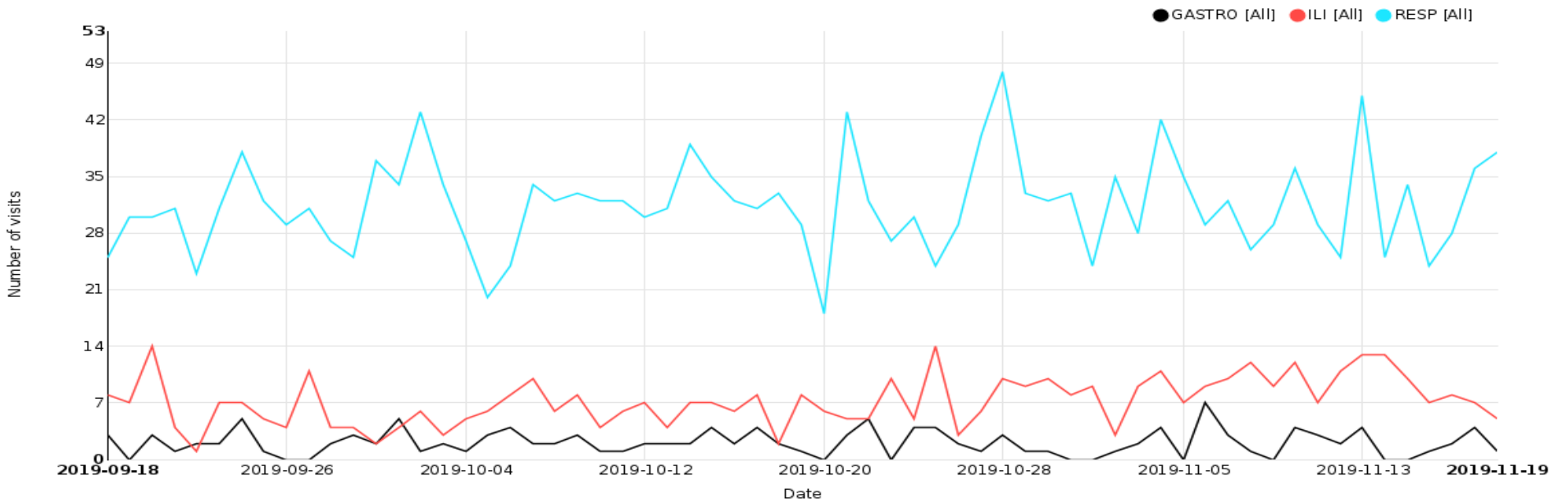
Date	Hospital	Reason for Admission
07/11/2019	KGH	UPPER RESPIRATORY TRACT INFECTION
08/11/2019	KGH	UPPER RESPIRATORY TRACT INFECTION
08/11/2019	KGH	MULTIDRUG OVERDOSE
13/11/2019	KGH	RESPIRATORY ILLNESS
15/11/2019	KGH	TOXIDROME OVERDOSE
17/11/2019	KGH	RESPIRATORY DISTRESS

NOTE: Further details can be obtained by contacting KFL&A PHI staff at adam.vandijk@kflaph.ca or 613-549-1232 x1510 All feedback is welcome and appreciated.

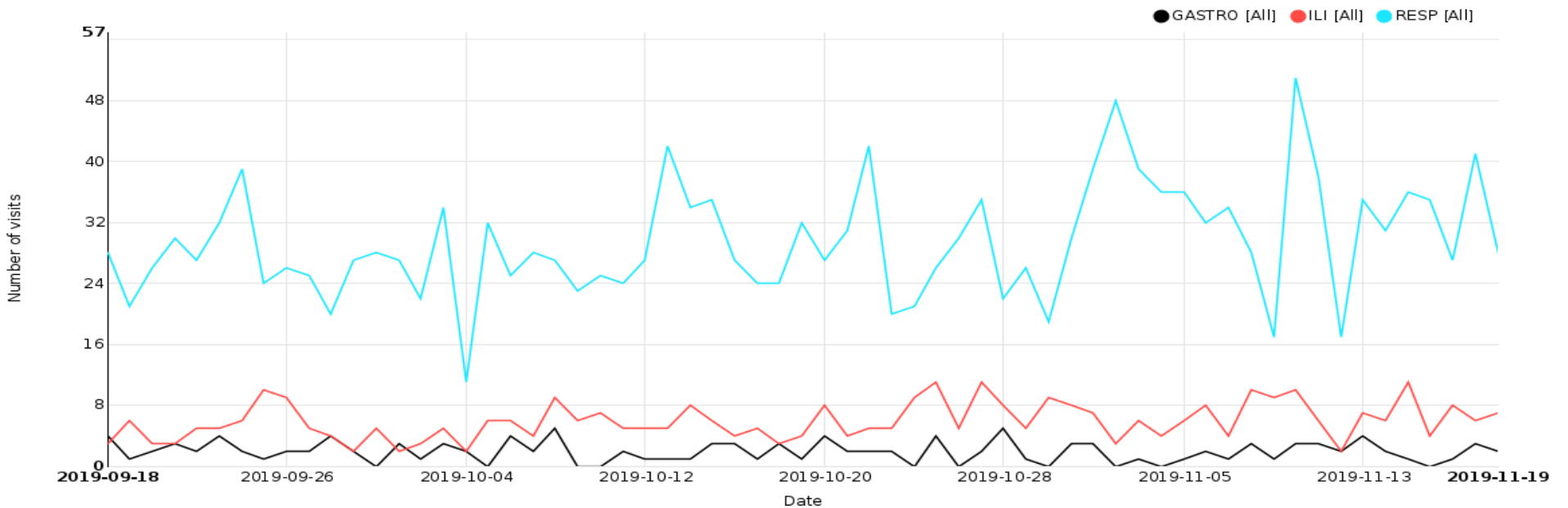
ED respiratory visits curve for Ontario hospitals providing data to the ACES system with historical yearly comparisons



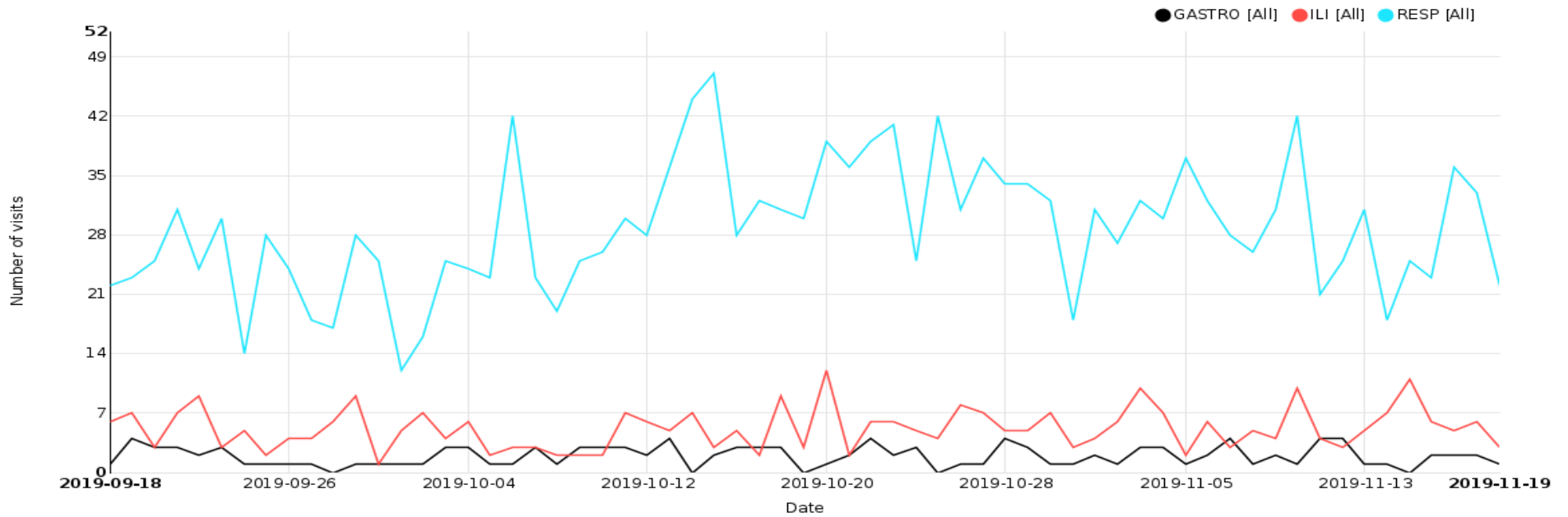
Respiratory, Gastrointestinal and Influenza-Like Illness/Fever ED Visits for KFL&A Health Unit



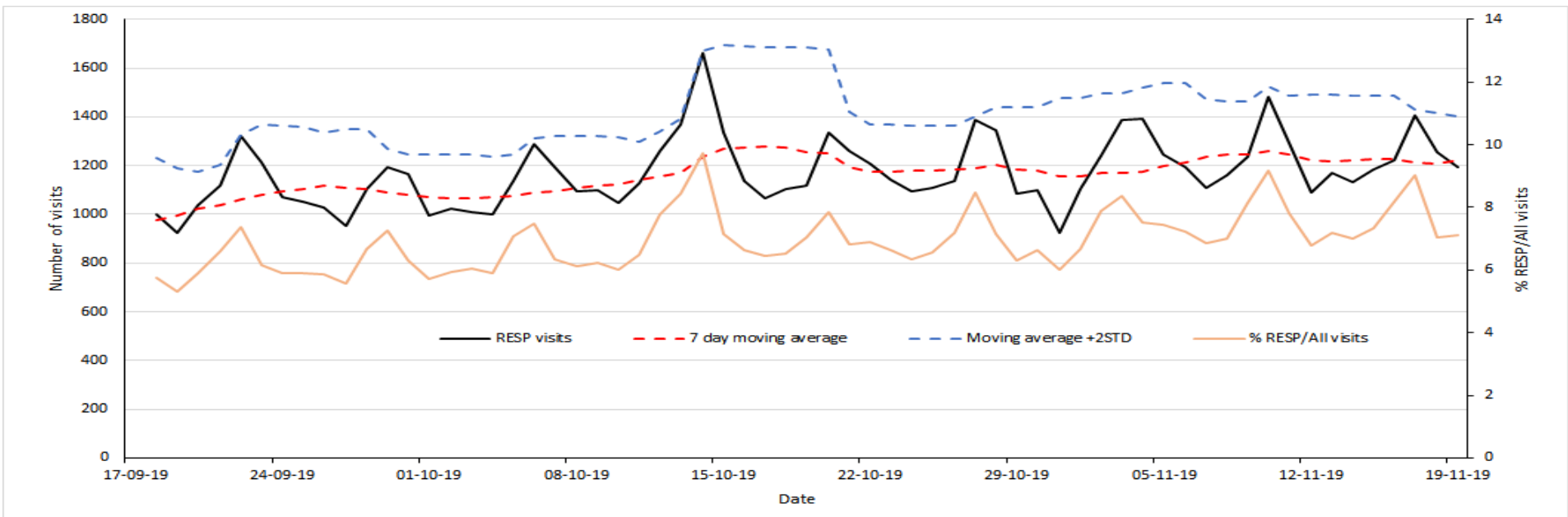
Respiratory, Gastrointestinal and Influenza-Like Illness/Fever ED Visits for HPE Health Unit



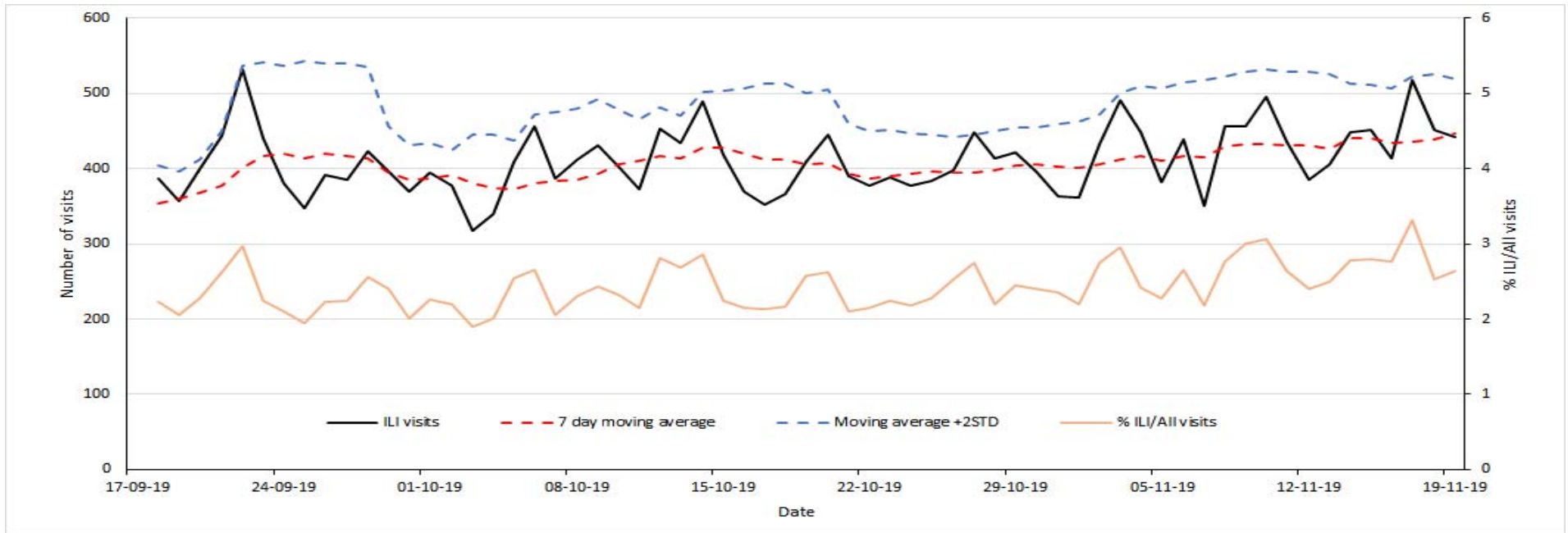
Respiratory, Gastrointestinal and Influenza-Like Illness/Fever ED Visits for LGL Health Unit



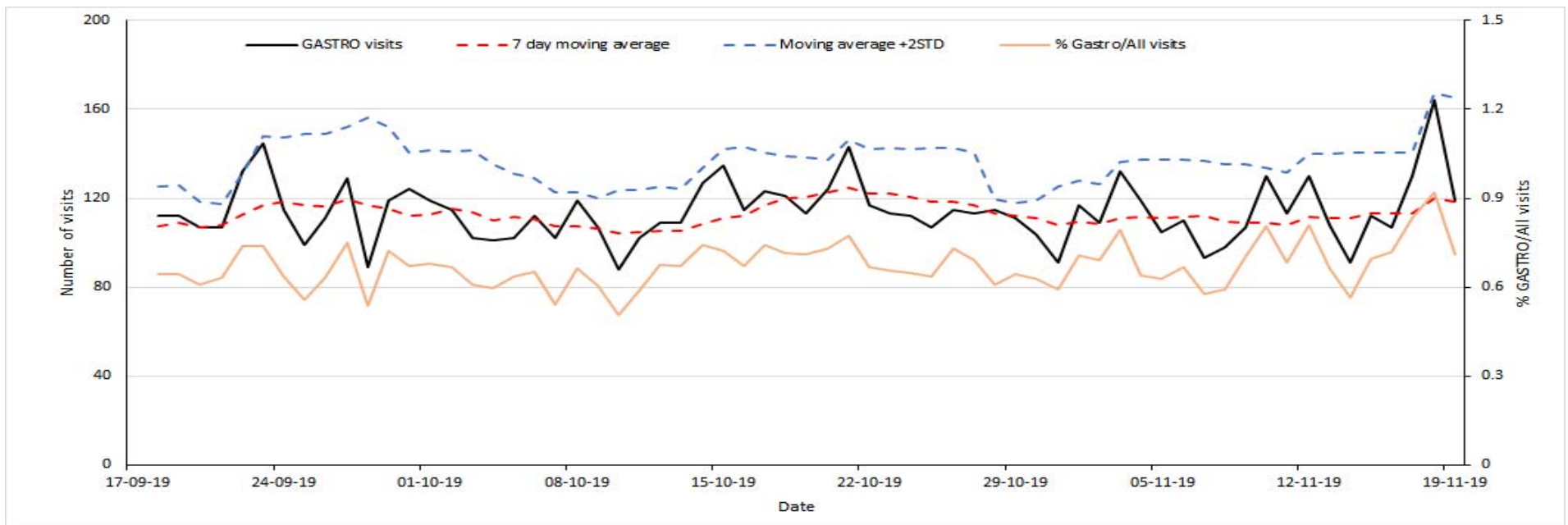
Respiratory ED Visits to Participating Ontario Hospitals



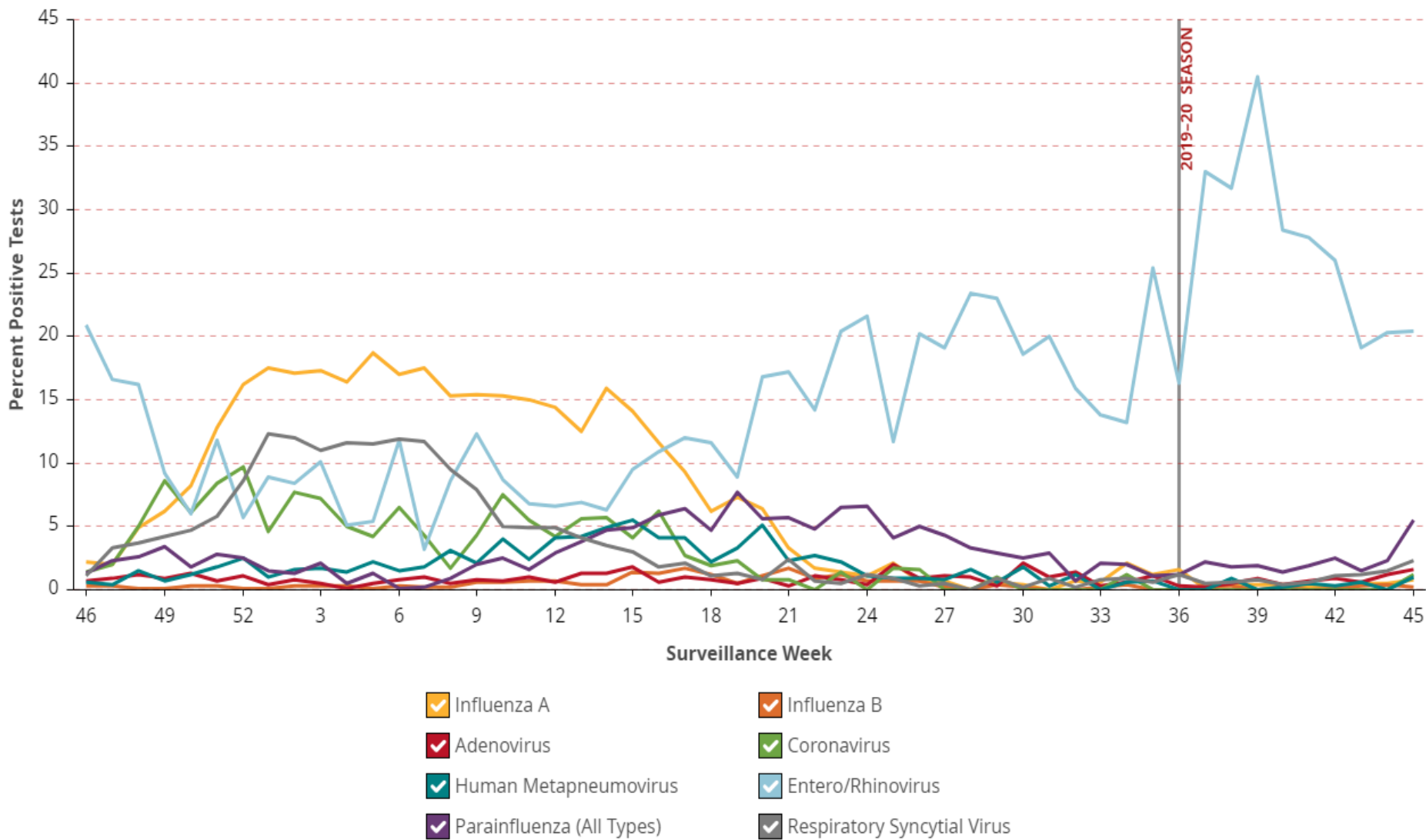
Influenza-Like Illness/Fever ED Visits to Participating Ontario Hospitals



Gastrointestinal ED Visits to Participating Ontario Hospitals



Percent of Respiratory Viral Pathogen(s) Detected Among Specimens Tested for that Pathogen by all Testing Methods by Surveillance Week



*Source: Ontario Respiratory Pathogen Bulletin, Public Health Ontario (with data obtained from the Public Health Agency of Canada's Respiratory Virus Detection tables)
Please review section 10 of the weekly pdf report for further information on the data sources used in the Ontario Respiratory Pathogen Bulletin.