

Regional Syndromic Surveillance Bi-Weekly Report

Wednesday October 23rd, 2019 - Tuesday November 5th, 2019

Health Unit Coverage = KFL&A, HPECHU, LGL

Kingston, Frontenac & Lennox and
Addington Public Health Knowledge
Management Team

ACES Hospital Emergency Department (ED) Activity

Summary: Overall emergency room visit volume was stable across all regional health unit jurisdictions compared to the previous two week period of October 9th through October 22nd. (KFL&A: 5675 vs. 5732 HPE: 4336 vs. 4240 LGL: 4828 vs. 4888).

Info. items: 1) The graph below indicates October was a particularly active month for tick related ED visits across the region. November is also a high volume month for tick-related ED presentations. Practice vigilance when visiting wooded and grassy areas, perform checks on yourself, your children and your pets regularly. 2) KFL&A PH has had one lab confirmed case of influenza A for the 2019-2020 season. More cases will inevitably start coming in as we move deeper into November based on historical data. 3) Provincially, ED visits and admissions for respiratory related complaints are currently stable and within expected averages. Rhinovirus, while still the most common respiratory virus currently circulating (see page 5), has been falling recently. Based on historic data, as rhinovirus tapers off, both RSV and influenza positivity starts rising. This is a good opportunity to focus efforts on influenza vaccinations, hand hygiene strategies and cough etiquette. Please visit [ILI mapper](#) for more updates.

KFL&A Respiratory: There is currently one respiratory outbreak of unknown origin occurring in a local long-term care/retirement facility.

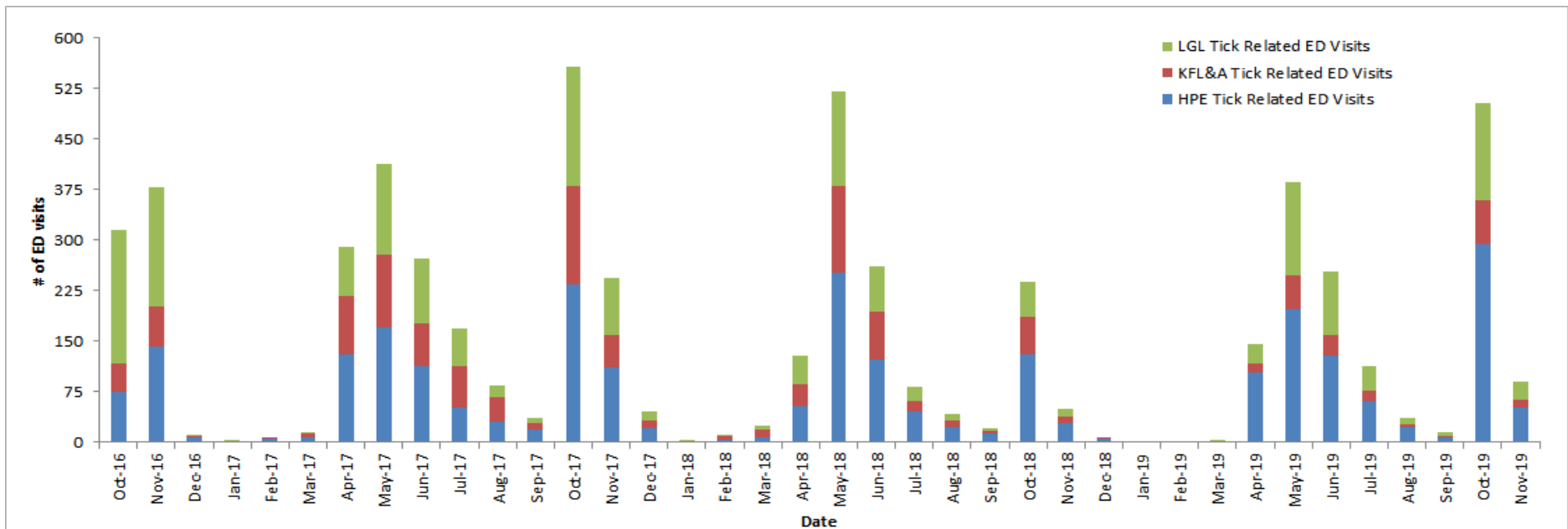
KFL&A Gastrointestinal: There is currently one enteric outbreak of unknown origin occurring in a local long-term care/retirement facility.

Local Admissions of Interest

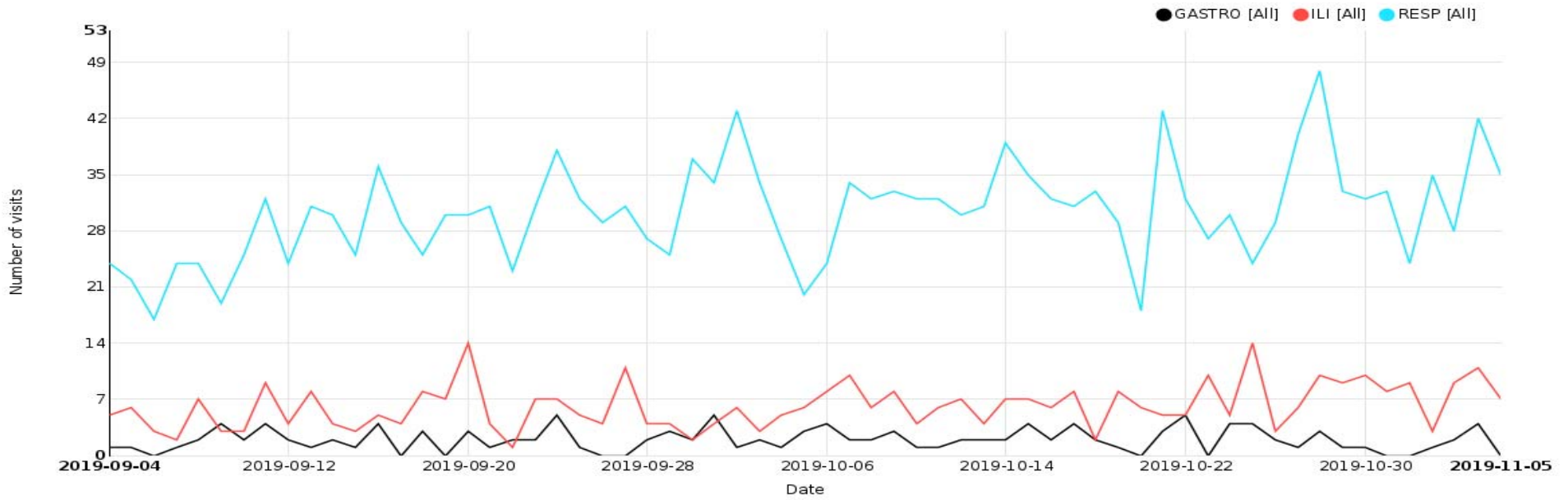
Date	Hospital	Reason for Admission
23/10/2019	KGH	ACUTE HEPATITIS NOT YET DIAGNOSED
23/10/2019	KGH	POLYSUBSTANCE OVERDOSE
25/10/2019	KGH	BRONCHIOLITIS
27/10/2019	KGH	CROUP
31/10/2019	KGH	HEPATITIS/TUBERCULOSIS
04/11/2019	KGH	MENINGITIS (2 INSTANCES)

NOTE: Further details can be obtained by contacting KFL&A PHI staff at adam.vandijk@kflaph.ca or 613-549-1232 x1510 All feedback is welcome and appreciated.

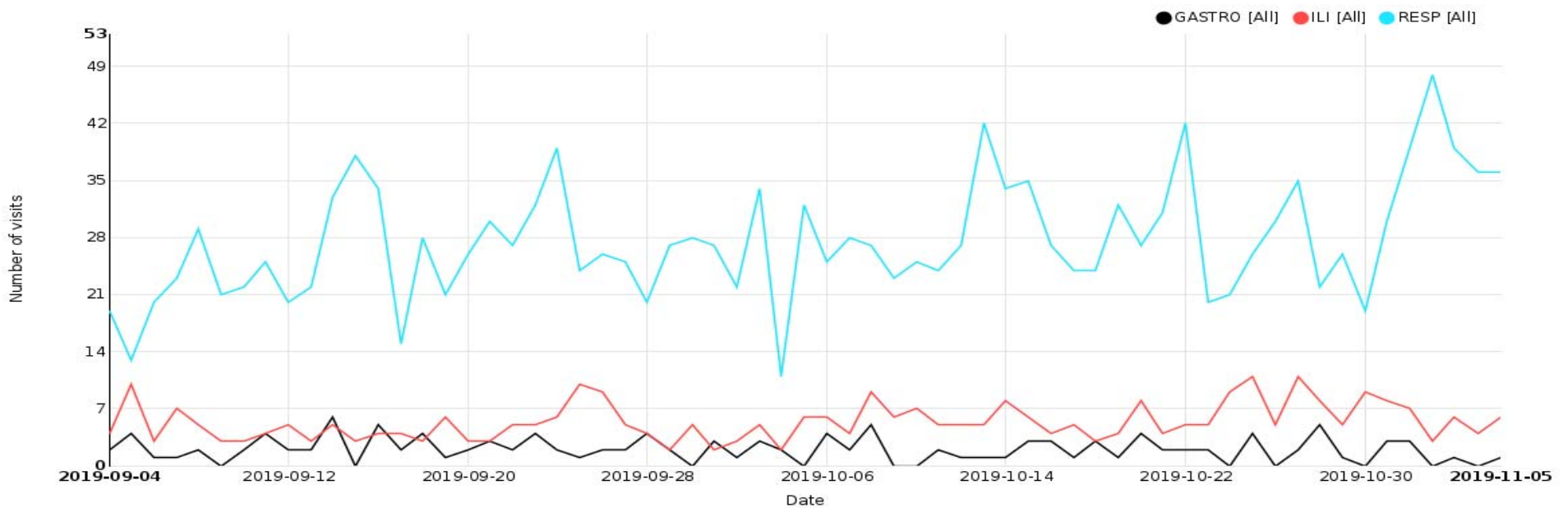
Monthly Tick-related ED visits by Regional Health Unit



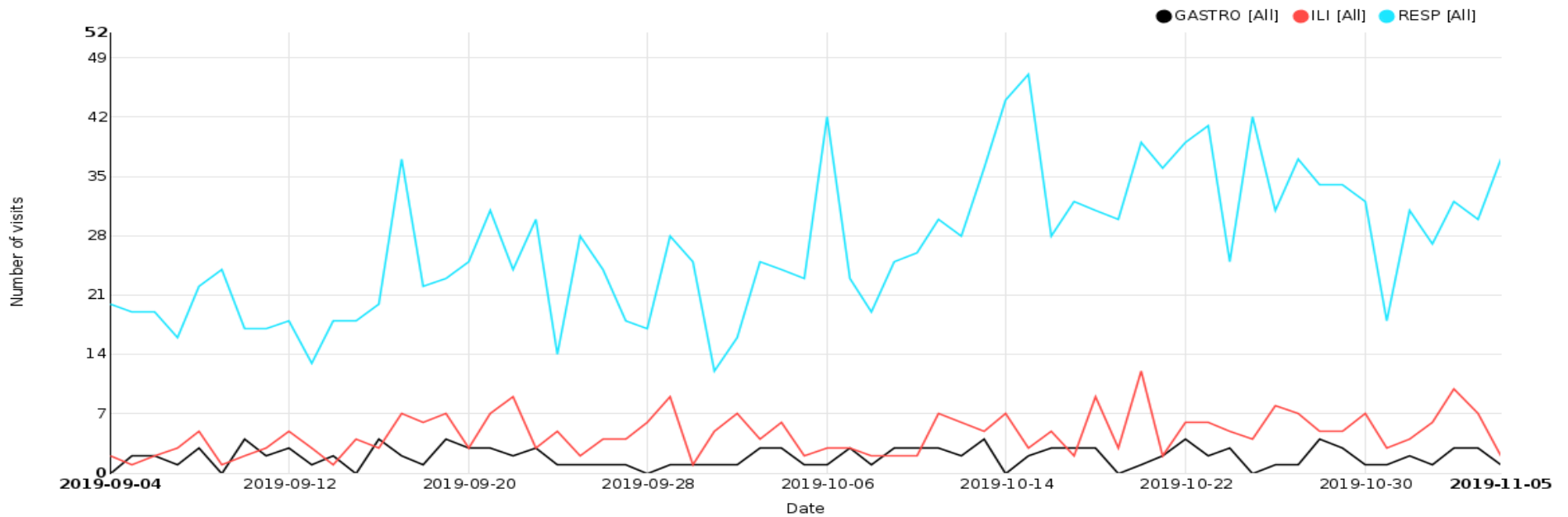
Respiratory, Gastrointestinal and Influenza-Like Illness/Fever ED Visits for KFL&A Health Unit



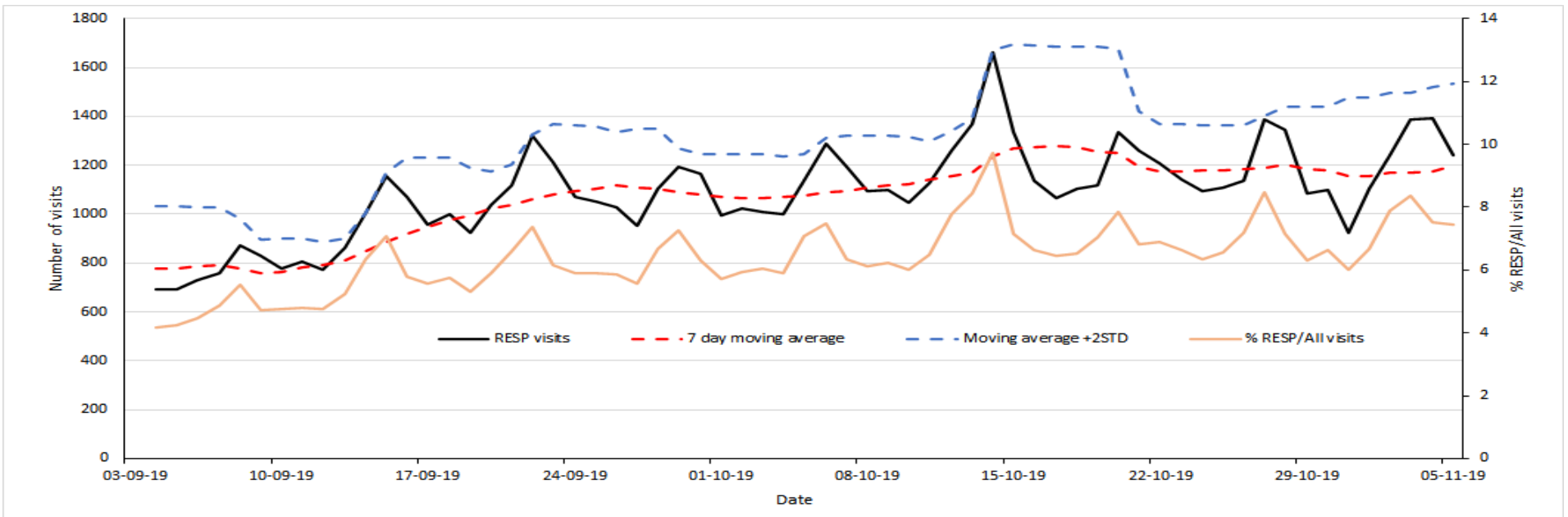
Respiratory, Gastrointestinal and Influenza-Like Illness/Fever ED Visits for HPE Health Unit



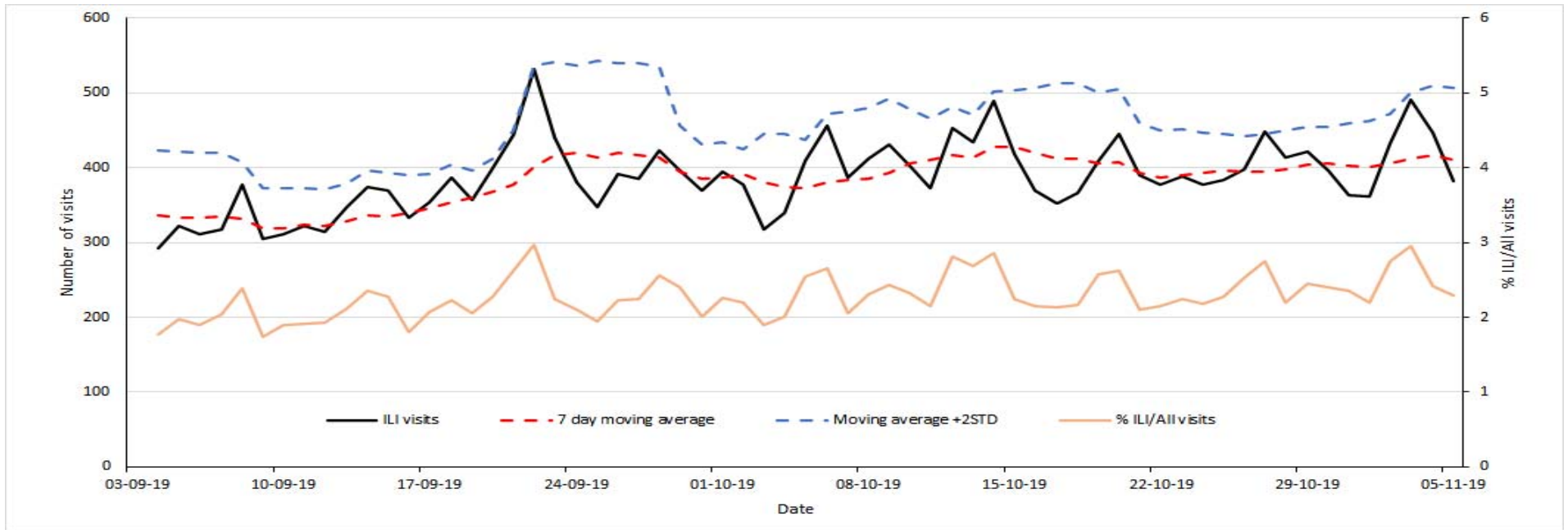
Respiratory, Gastrointestinal and Influenza-Like Illness/Fever ED Visits for LGL Health Unit



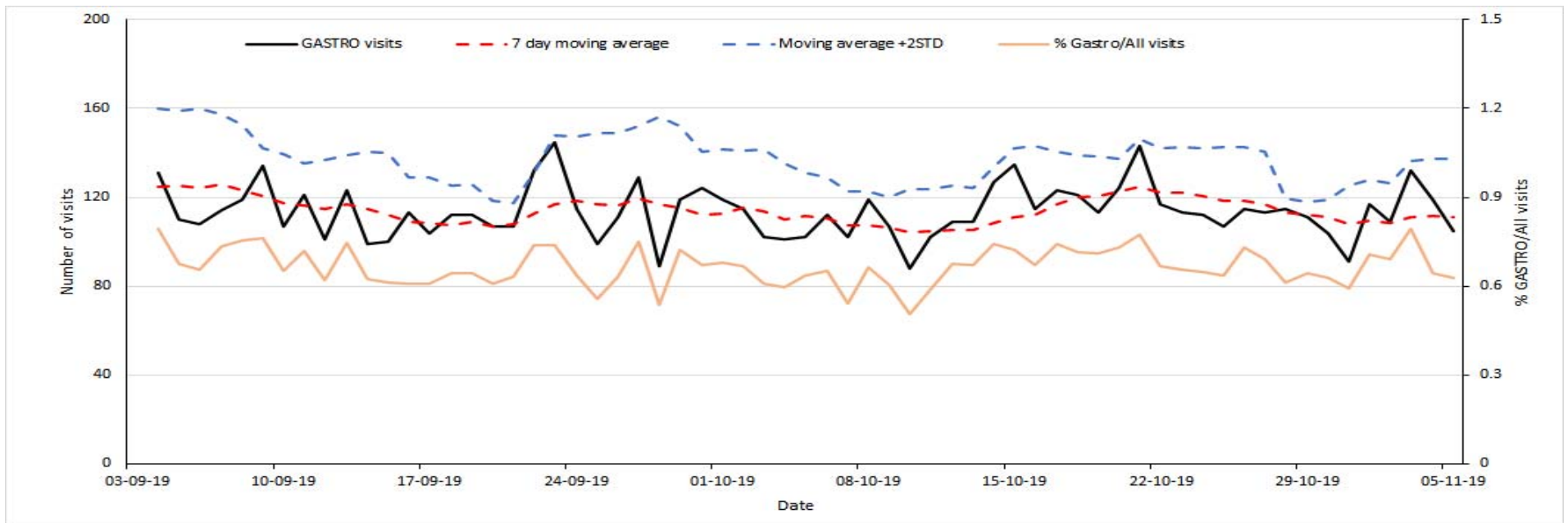
Respiratory ED Visits to Participating Ontario Hospitals



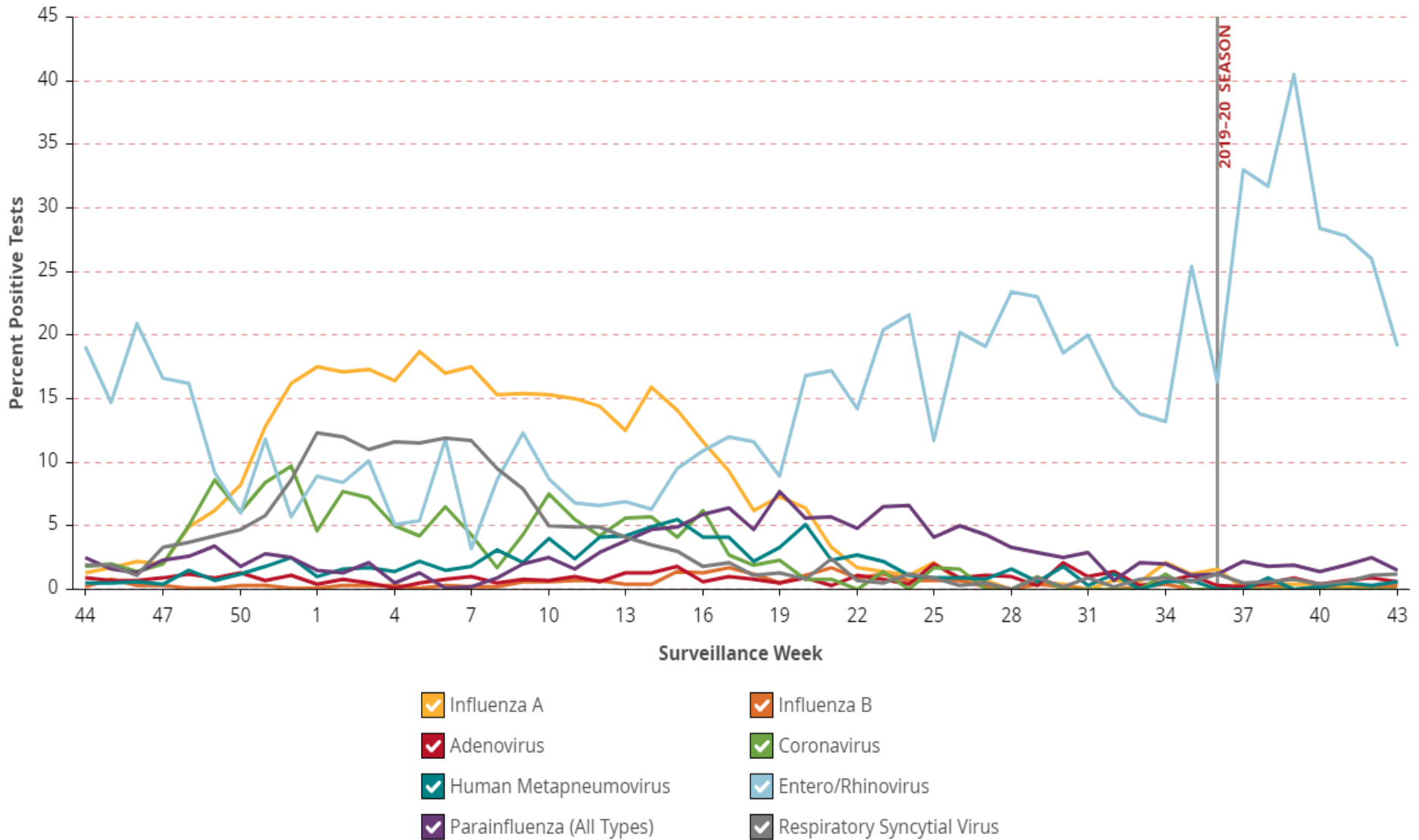
Influenza-Like Illness/Fever ED Visits to Participating Ontario Hospitals



Gastrointestinal ED Visits to Participating Ontario Hospitals



Percent of Respiratory Viral Pathogen(s) Detected Among Specimens Tested for that Pathogen by all Testing Methods by Surveillance Week



*Source: Ontario Respiratory Pathogen Bulletin, Public Health Ontario (with data obtained from the Public Health Agency of Canada's Respiratory Virus Detection tables)
Please review section 10 of the weekly pdf report for further information on the data sources used in the Ontario Respiratory Pathogen Bulletin.