

Regional Syndromic Surveillance Bi-Weekly Report

Wednesday October 9th, 2019 - Tuesday October 22nd, 2019

Health Unit Coverage = KFL&A, HPECHU, LGL

Kingston, Frontenac & Lennox and
Addington Public Health Knowledge
Management Team

ACES Hospital Emergency Department (ED) Activity

Summary: Overall emergency room visit volume was slightly elevated in LGL while stable in both the KFL&A and HPE health unit jurisdictions compared to the previous two week period of September 25th through October 8th. (KFL&A: 5732 vs. 5681 HPE: 4240 vs. 4272 LGL: 4888 vs. 4640).

Info. items: 1) Tick related ED visits over the past two weeks have jumped significantly, particularly in the HPE health unit. Historically, November is also a high volume month in terms of tick-related presentations to regional hospitals. Continued vigilance is needed when visiting wooded and grassy areas, perform checks on yourself, your children and your pets regularly this Fall. Also of note, the KFL&A jurisdiction (through the month of September), has already eclipsed the number of human cases of Lyme disease in 2019 compared to the previous all-time high seen in 2017. 2) KFL&A PH has received its first lab confirmed case of Influenza A for the 2019-2020 season. ED visits and admissions for respiratory related complaints are currently stable and within expected averages for this time of year. This is a good opportunity to focus efforts on influenza vaccinations, hand hygiene strategies and cough etiquette. Please visit our [ILI mapper](#) website for ongoing updates this respiratory season.

KFL&A Respiratory: There was an active rhinovirus outbreak in a local long-term care/retirement facility in the last two weeks, however it has been declared over as of Oct. 23rd.

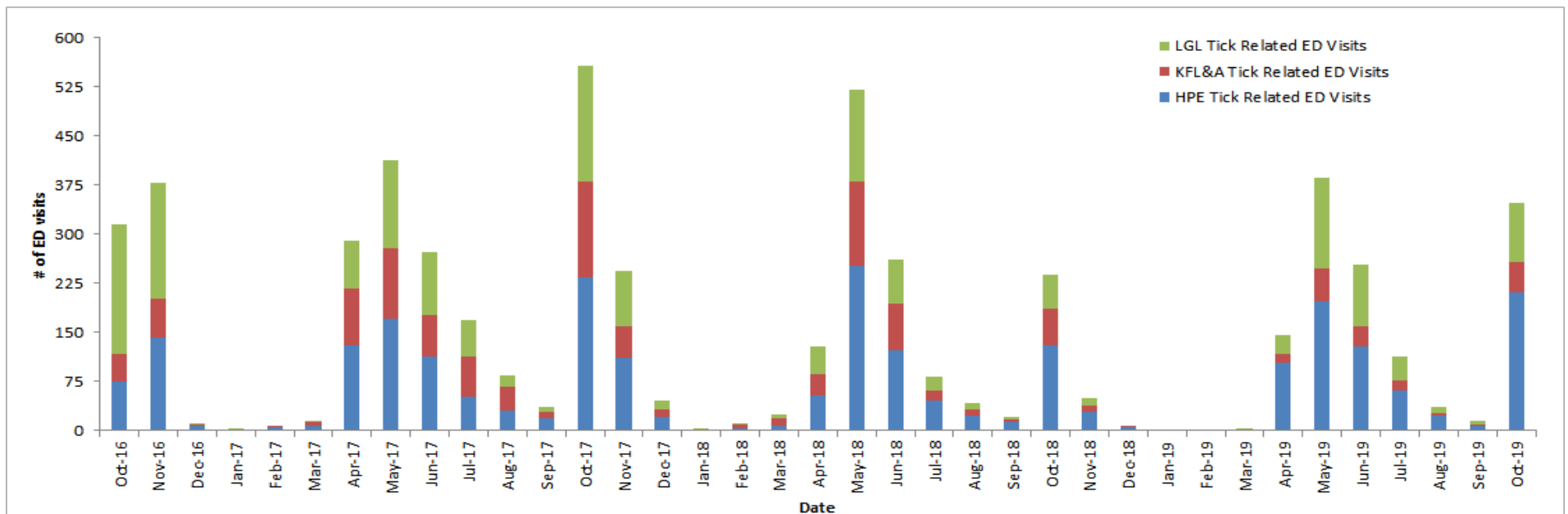
KFL&A Gastrointestinal: There are currently no enteric outbreaks occurring in any local long-term care/retirement facilities.

Local Admissions of Interest

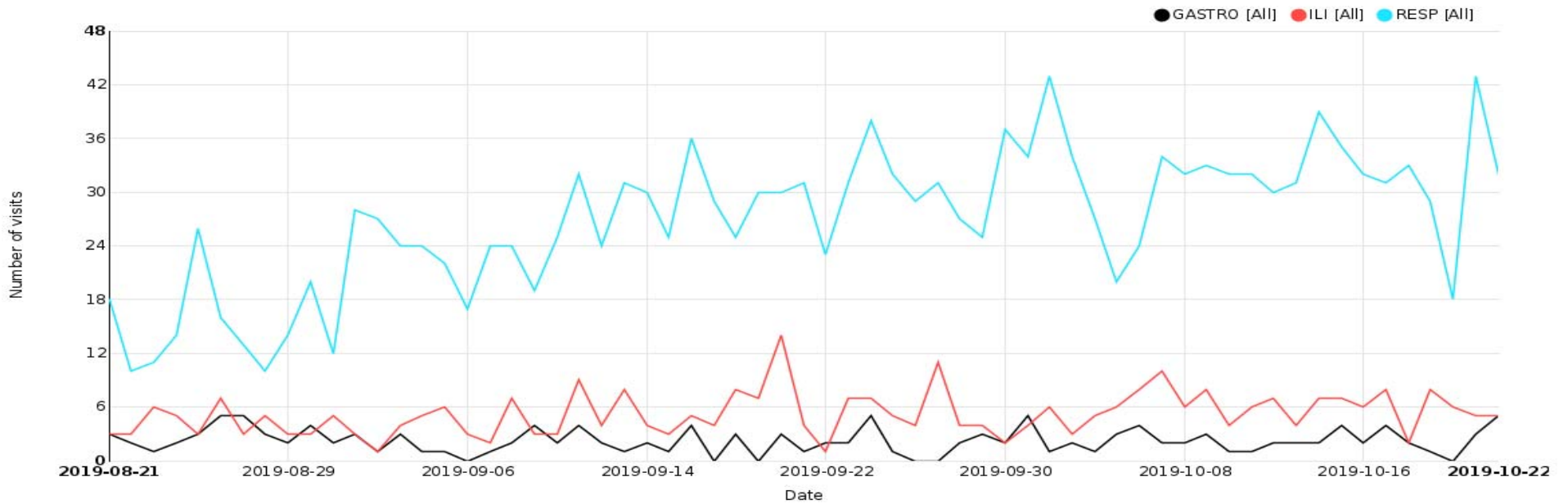
Date	Hospital	Reason for Admission
11/10/2019	KGH	CROUP
14/10/2019	KGH	MENINGITIS
15/10/2019	KGH	ACUTE HEPATITIS NOT YET DIAGNOSED
15/10/2019	KGH	OPIOID OVERDOSE
16/10/2019	KGH	TOXIDROME OVERDOSE
17/10/2019	KGH	GROUP A STREPTOCOCCUS BACTEREMIA

NOTE: Further details can be obtained by contacting KFL&A PHI staff at adam.vandijk@kflaph.ca or 613-549-1232 x1510 All feedback is welcome and appreciated.

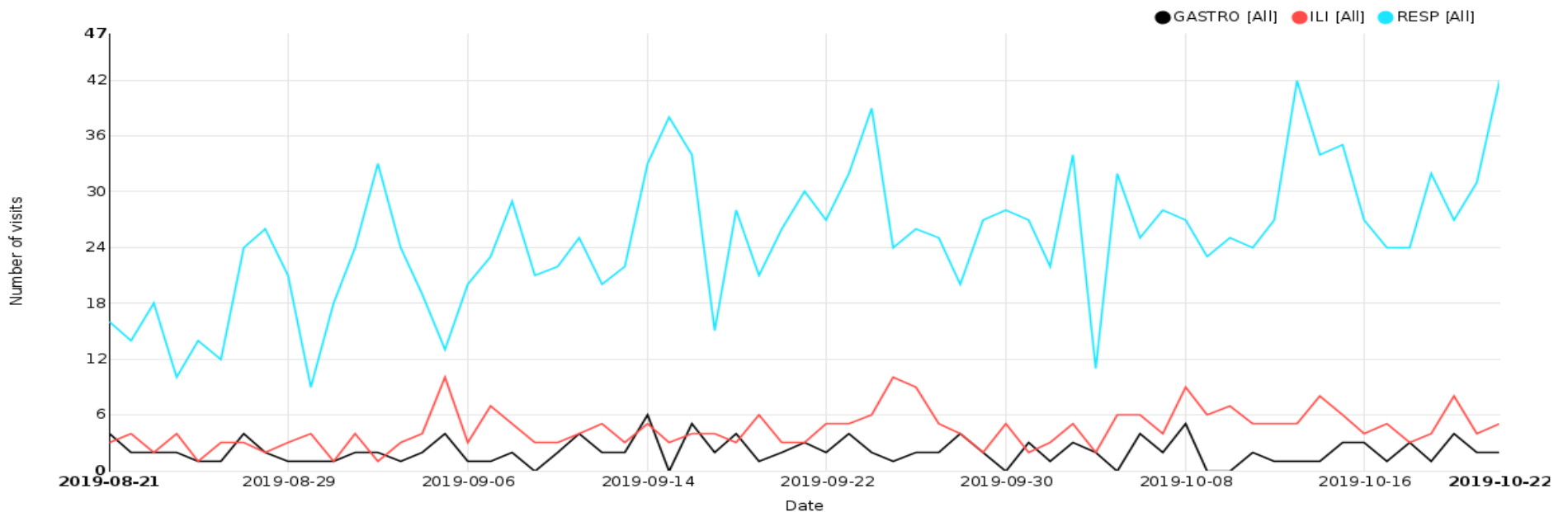
Monthly Tick-related ED visits by Regional Health Unit



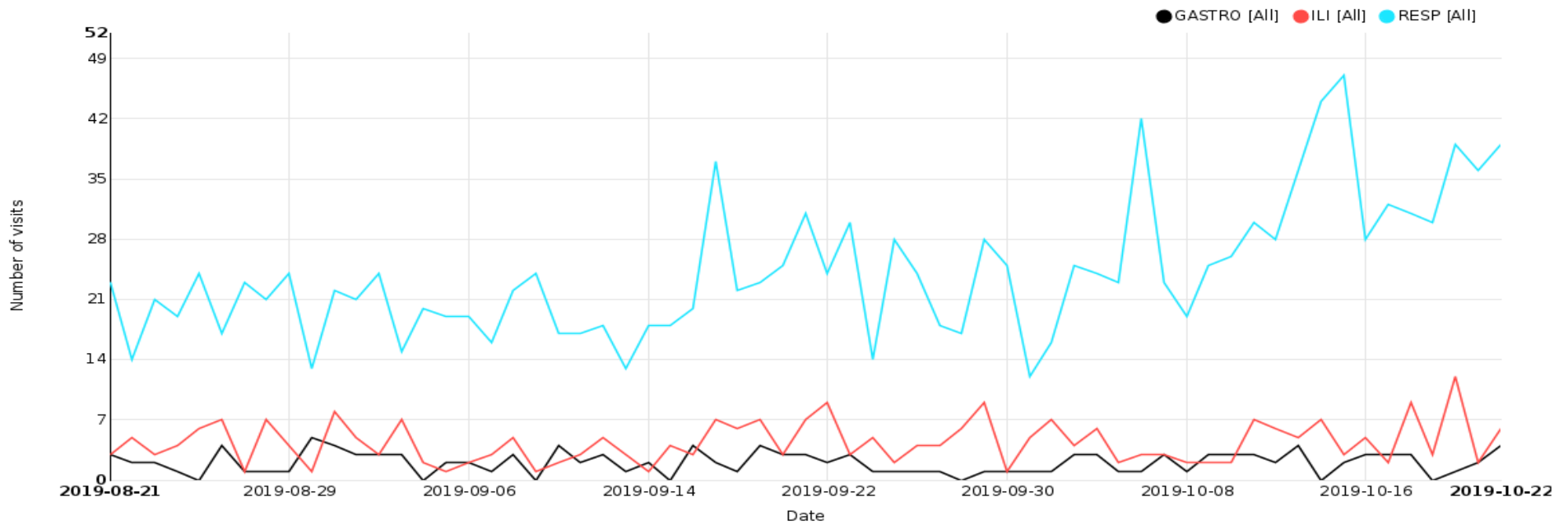
Respiratory, Gastrointestinal and Influenza-Like Illness/Fever ED Visits for KFL&A Health Unit



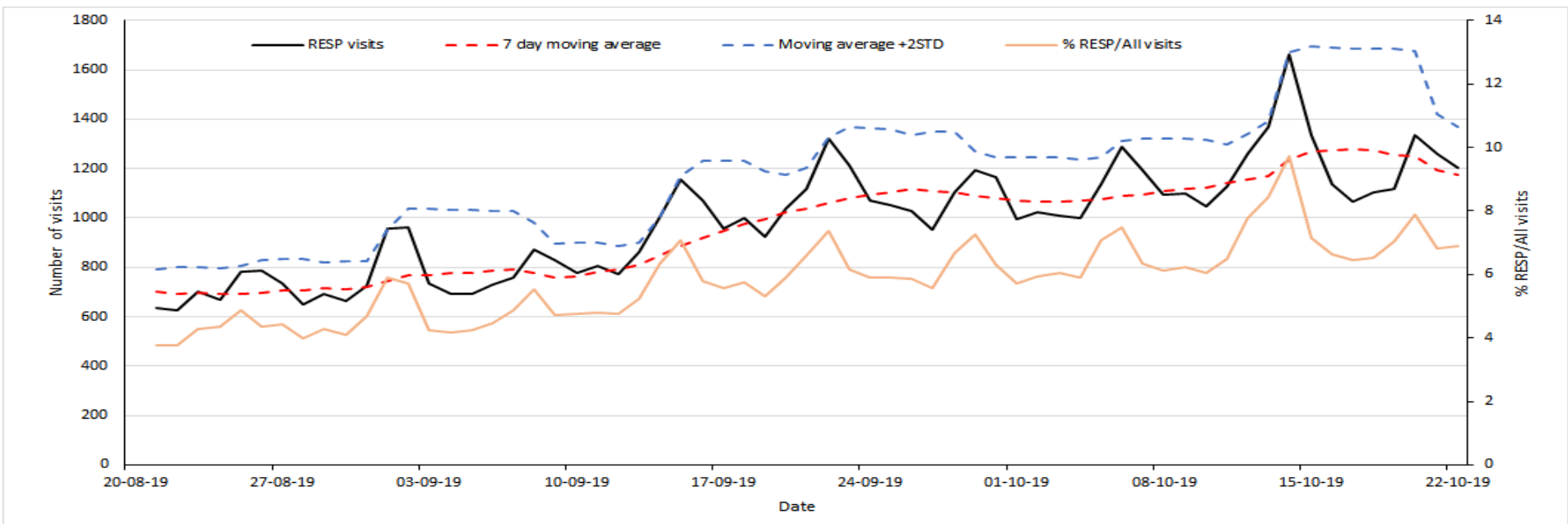
Respiratory, Gastrointestinal and Influenza-Like Illness/Fever ED Visits for HPE Health Unit



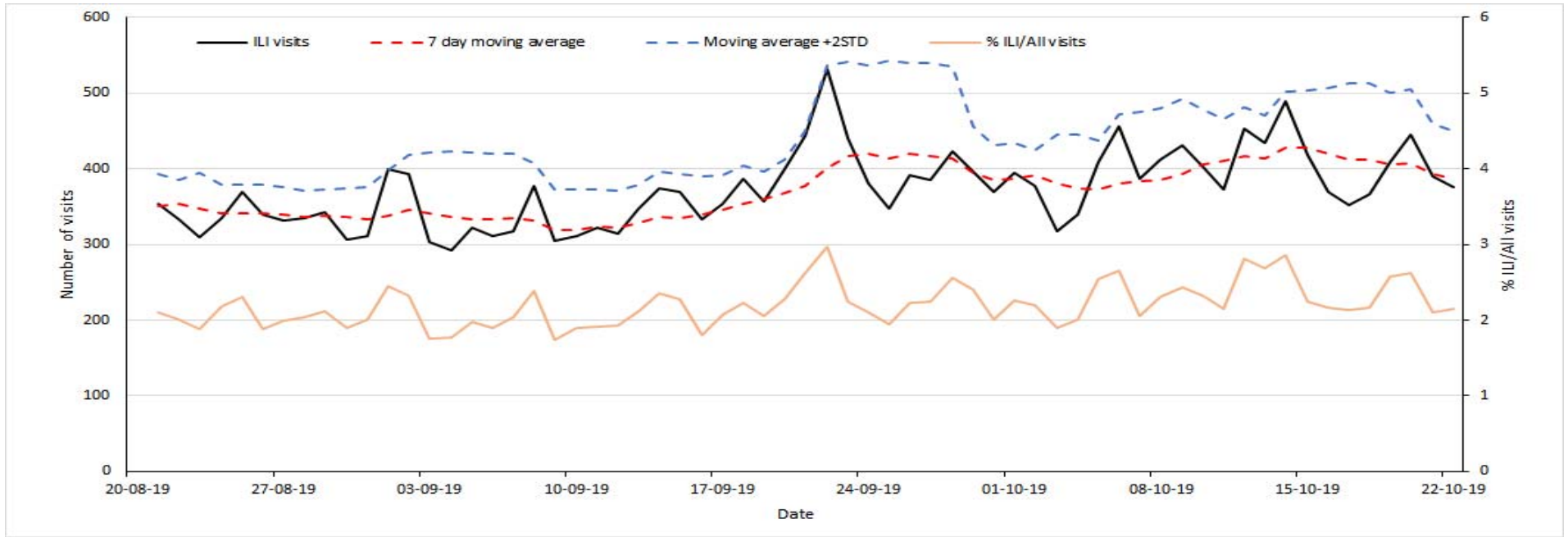
Respiratory, Gastrointestinal and Influenza-Like Illness/Fever ED Visits for LGL Health Unit



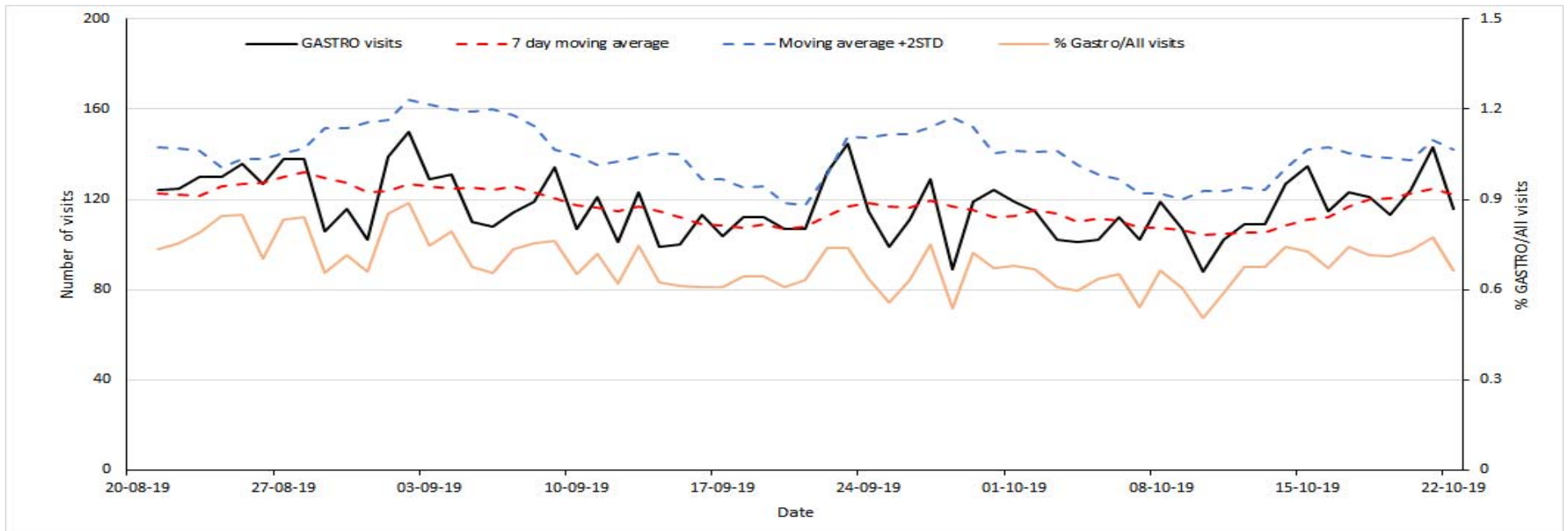
Respiratory ED Visits to Participating Ontario Hospitals



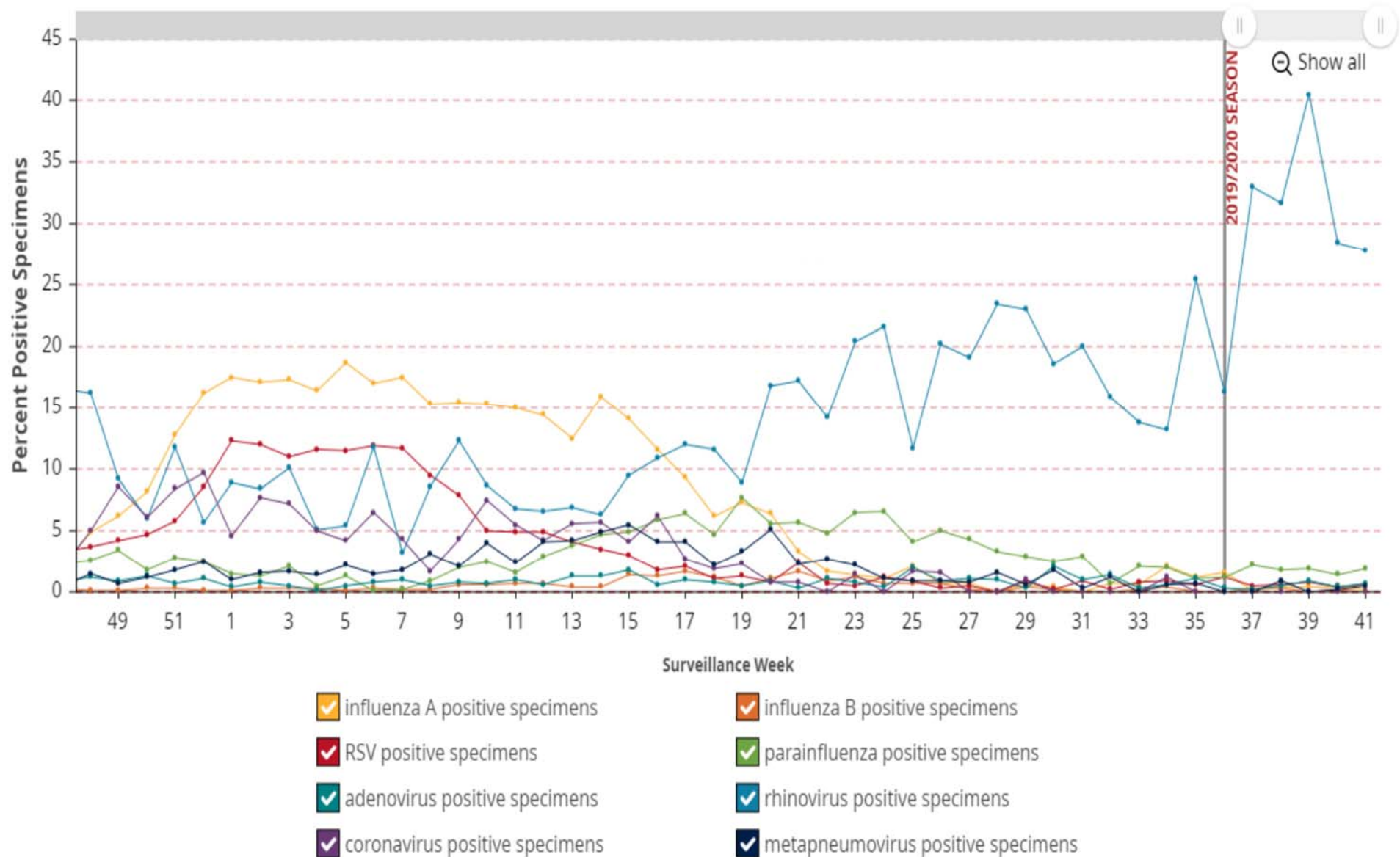
Influenza-Like Illness/Fever ED Visits to Participating Ontario Hospitals



Gastrointestinal ED Visits to Participating Ontario Hospitals



Percent positivity of specimens tested for all respiratory viruses by week



*Source: Ontario Respiratory Pathogen Bulletin, Public Health Ontario (with data obtained from the Public Health Agency of Canada’s Respiratory Virus Detection tables)
Please review section 10 of the weekly pdf report for further information on the data sources used in the Ontario Respiratory Pathogen Bulletin.