

# Regional Syndromic Surveillance Bi-Weekly Report

Wednesday September 25th, 2019 - Tuesday October 8th, 2019

Health Unit Coverage = KFL&A, HPECHU, LGL

Kingston, Frontenac & Lennox and  
Addington Public Health Knowledge  
Management Team

## ACES Hospital Emergency Department (ED) Activity

**Summary:** Overall emergency room visit volume was stable in each of the three regional health unit jurisdictions compared to the previous two week period of September 11th through September 24th. (KFL&A: 5681 vs. 5755 HPE: 4272 vs. 4307 LGL: 4640 vs. 4680).

**Info. items:** 1) While rhinovirus is still circulating at a high rate across Ontario (see page 5), the annual asthma epidemic is already on a downward slope. Rhinovirus however can still be contributing to other respiratory-related ED visits being seen across provincial hospitals. 2) Regionally, tick related ED visits have already started to increase through the first week of October (see below graph). This trend will continue through November based on historical data and what we know about the ticks life cycle. Ticks are in their adult stage in the Fall months which makes them easier to spot as they are larger. Always be vigilant when visiting wooded and grassy areas, perform checks on yourself, your children and your pets regularly this Fall. 3) In preparation for this years upcoming influenza season our ILI mapper website has recently been updated and is currently active. Maps and graphs are updated weekly, while health unit specific graphs are updated daily. Click [HERE](#) to visit the site.

**KFL&A Respiratory:** There are currently no respiratory outbreaks occurring in any local long-term care/retirement facilities.

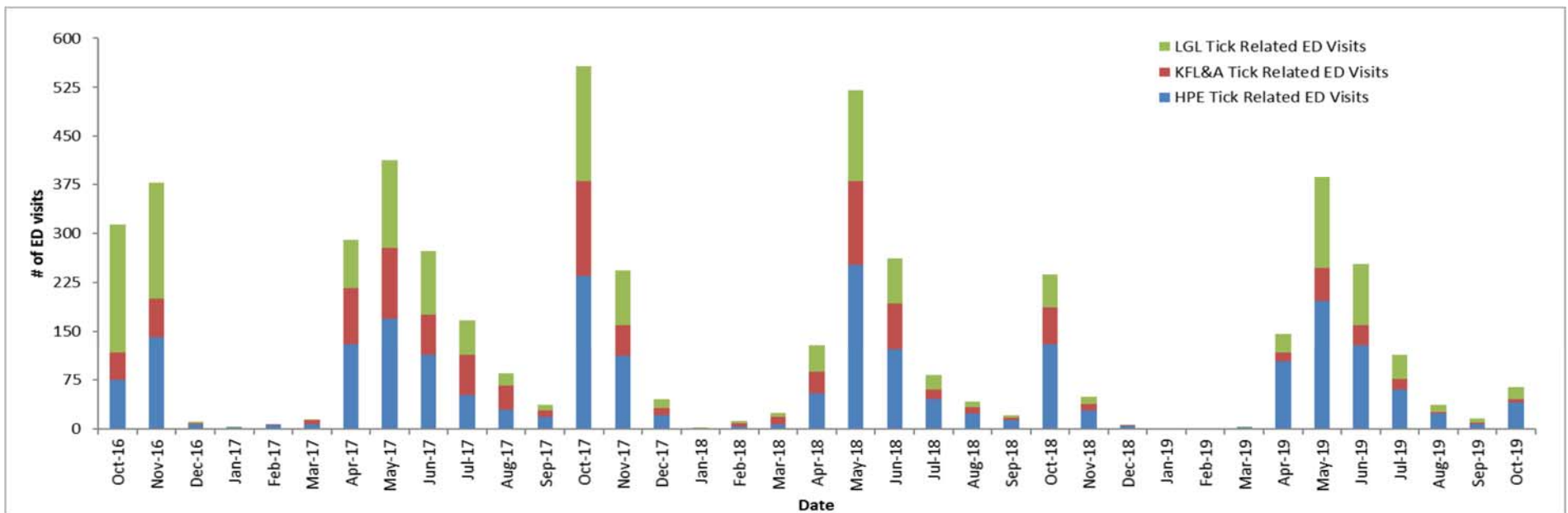
**KFL&A Gastrointestinal:** There are currently no enteric outbreaks occurring in any local long-term care/retirement facilities.

### Local Admissions of Interest

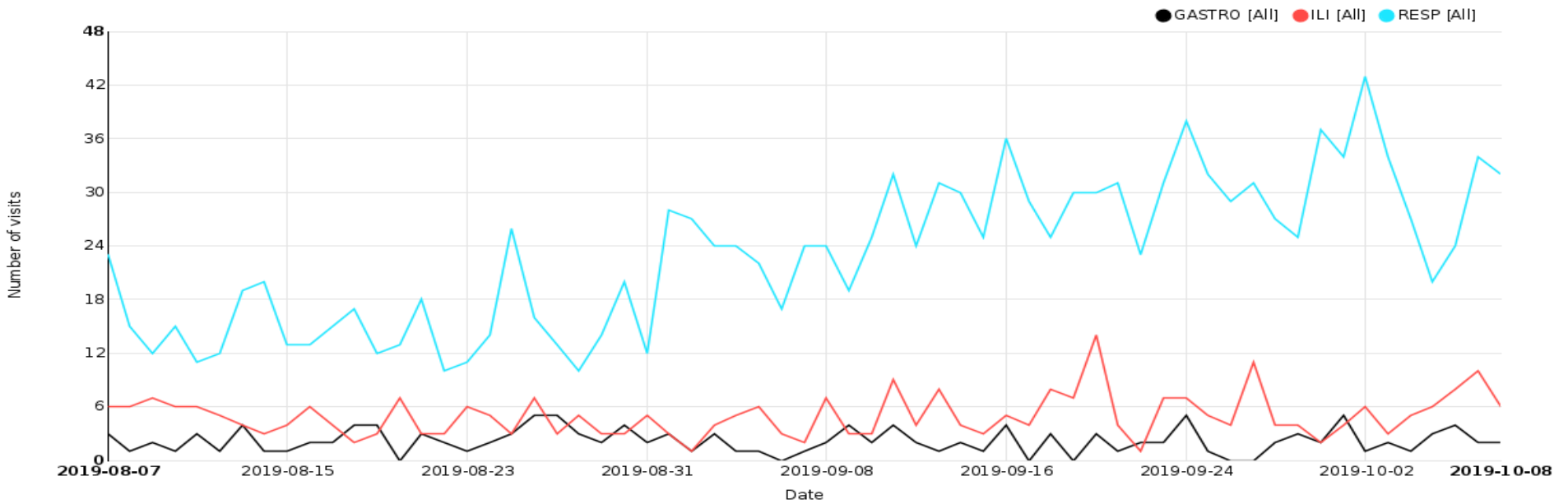
Date	Hospital	Reason for Admission
27/09/2019	KGH	HEPATITIS
02/10/2019	KGH	RESPIRATORY TRACT INFECTION
04/10/2019	KGH	UPPER RESPIRATORY TRACT INFECTION
06/10/2019	KGH	HEPATITIS NOT YET DIAGNOSED
08/10/2019	KGH	VIRAL HEPATITIS
08/10/2019	KGH	RESPIRATORY FAILURE/RULE OUT TUBERCULOSIS

NOTE: Further details can be obtained by contacting KFL&A PHI staff at adam.vandijk@kflaph.ca or 613-549-1232 x1510 All feedback is welcome and appreciated.

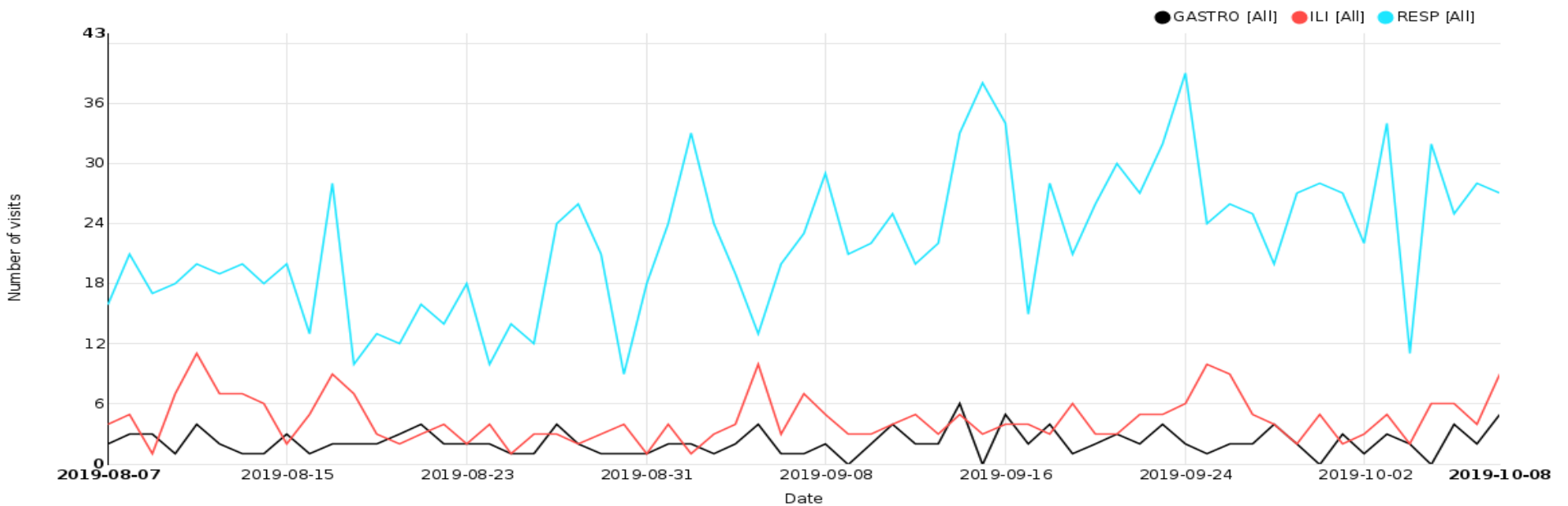
### Monthly Tick-related ED visits by Regional Health Unit



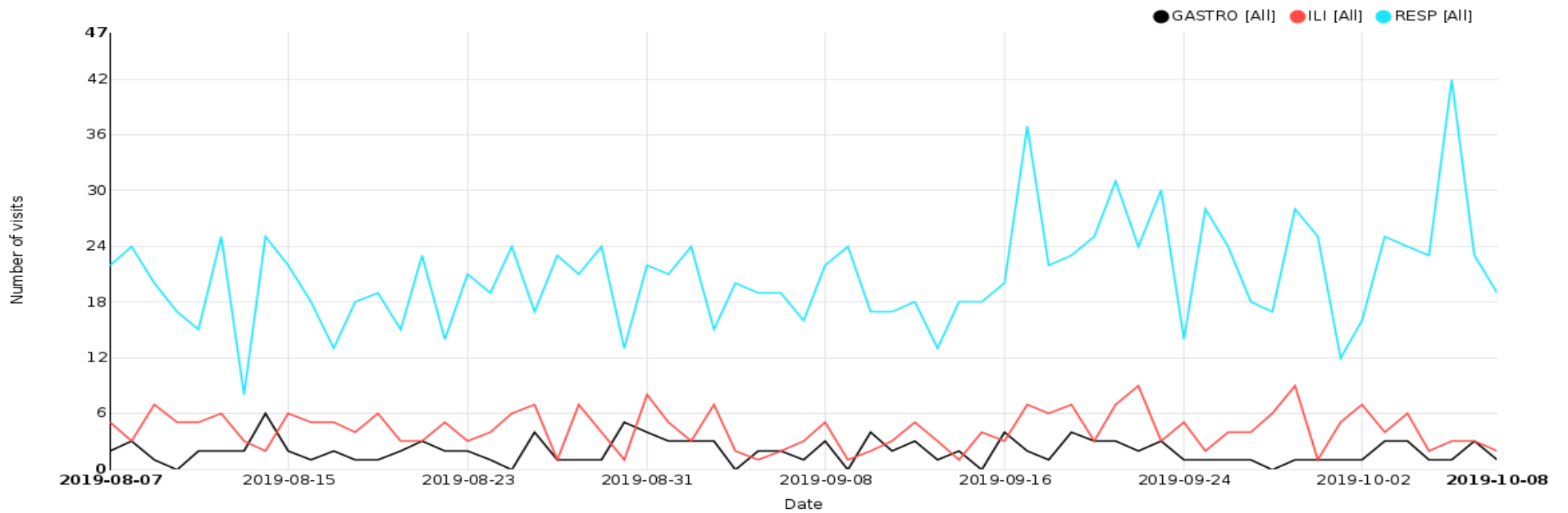
## Respiratory, Gastrointestinal and Influenza-Like Illness/Fever ED Visits for KFL&A Health Unit



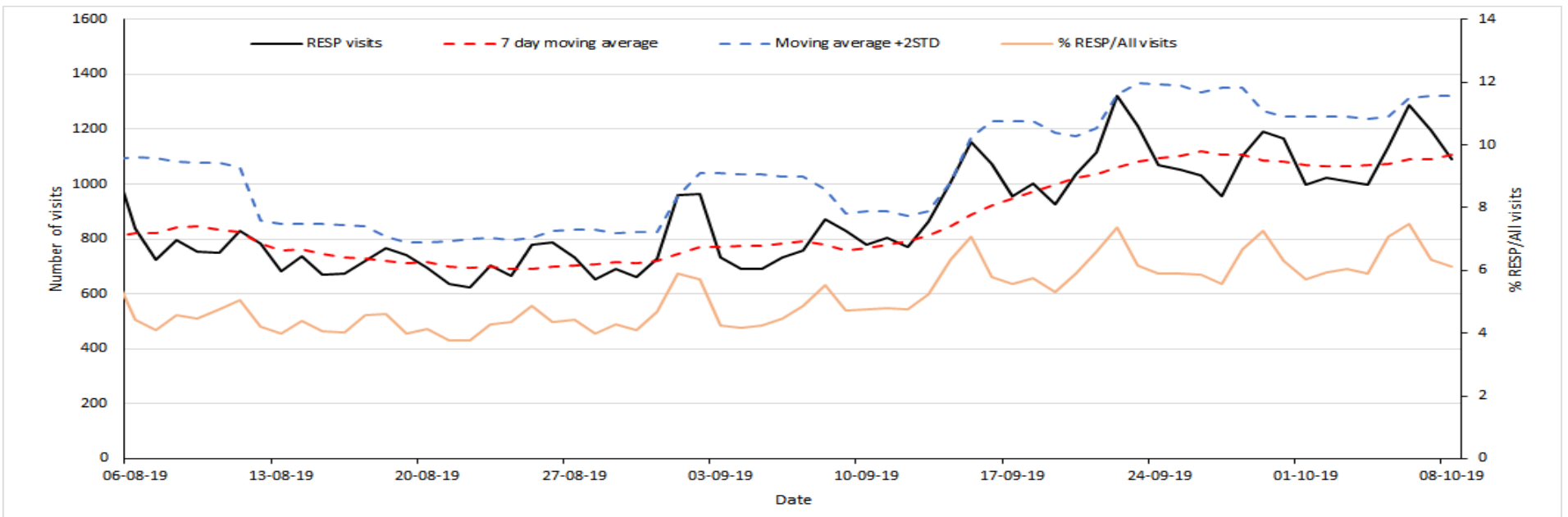
## Respiratory, Gastrointestinal and Influenza-Like Illness/Fever ED Visits for HPE Health Unit



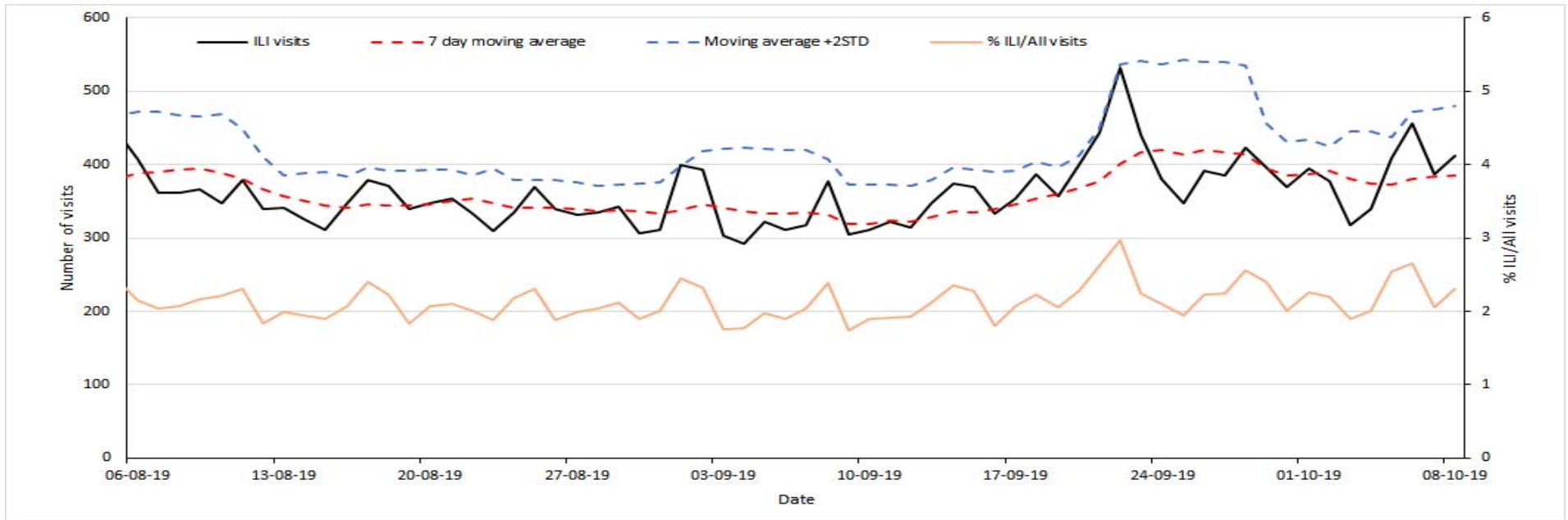
## Respiratory, Gastrointestinal and Influenza-Like Illness/Fever ED Visits for LGL Health Unit



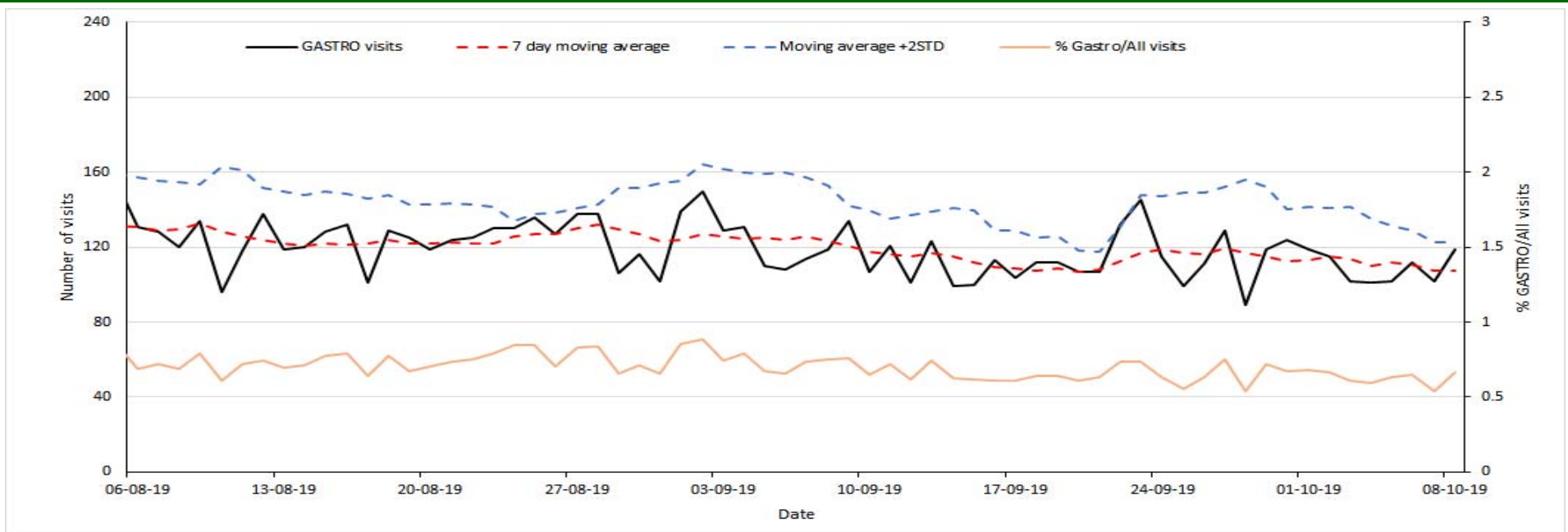
## Respiratory ED Visits to Participating Ontario Hospitals



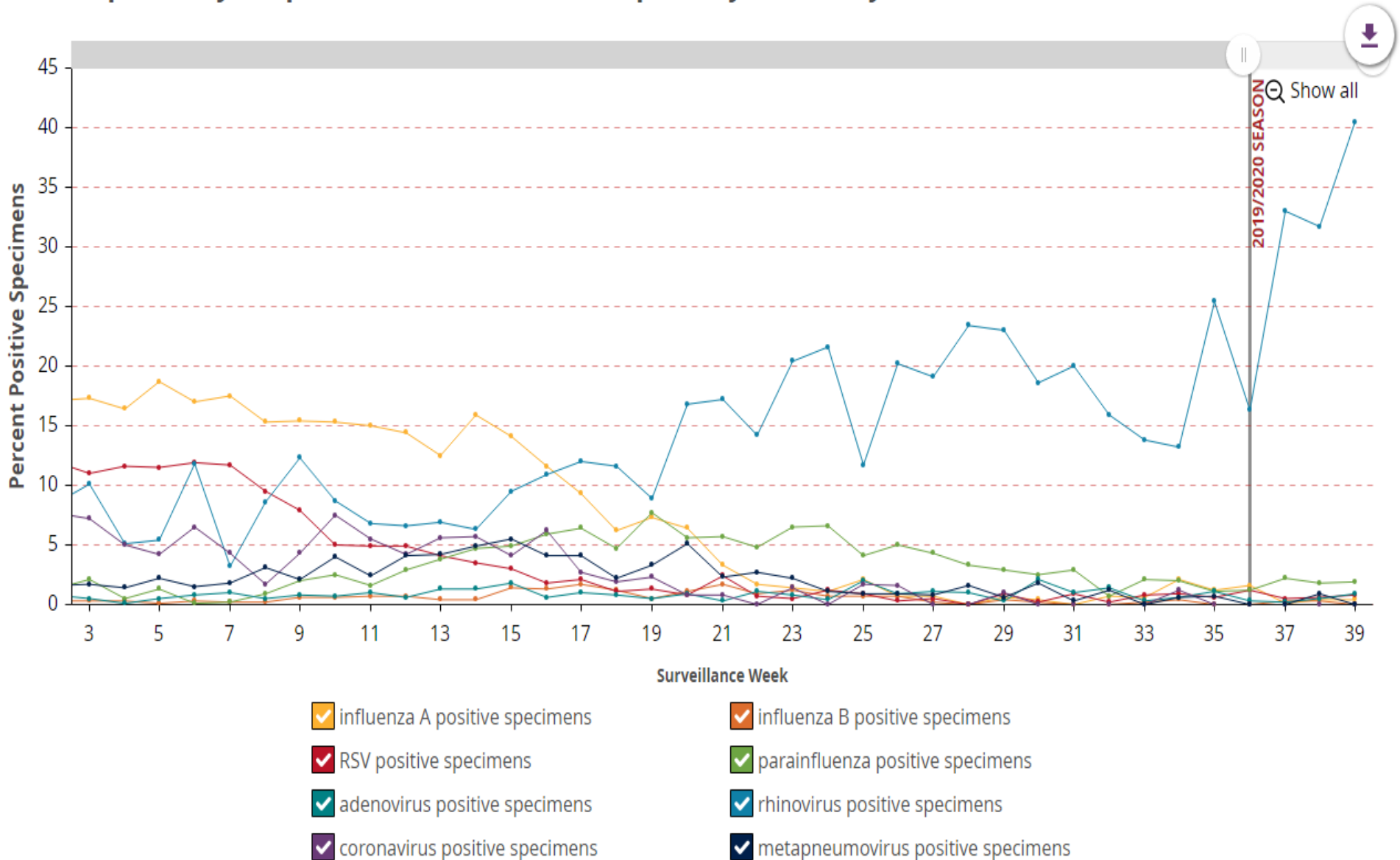
## Influenza-Like Illness/Fever ED Visits to Participating Ontario Hospitals



## Gastrointestinal ED Visits to Participating Ontario Hospitals



## Percent positivity of specimens tested for all respiratory viruses by week



\*Source: Ontario Respiratory Pathogen Bulletin, Public Health Ontario (with data obtained from the Public Health Agency of Canada's Respiratory Virus Detection tables)  
Please review section 10 of the weekly pdf report for further information on the data sources used in the Ontario Respiratory Pathogen Bulletin.