

Regional Syndromic Surveillance Bi-Weekly Report

Wednesday April 10th, 2019 - Tuesday April 23rd, 2019

Health Unit Coverage = KFL&A, HPECHU, LGL

Kingston, Frontenac & Lennox and
Addington Public Health Knowledge
Management Team

ACES Hospital Emergency Department (ED) Activity

Summary: Overall emergency room visit volume was stable in each of the three regional health unit jurisdictions compared to the previous two week period of March 27th through April 9th. (KFL&A: 4932 vs. 4963 HPE: 4493 vs. 4349 LGL: 4472 vs. 4463).

Info. items: 1) Influenza- and respiratory-related emergency department visit activity had a slight rise in the past week, however levels are still firmly within expected seasonal values. 2) Influenza A is still circulating both provincially and nationally with A(H3N2) detections being responsible for a majority of the cases over the past 8 weeks. Influenza A(H1N1) is still the dominate strain this season while influenza B circulation still remains at very low levels. 3) With Spring around the corner, so to is the regional tick season. The months' of May/June and Oct/Nov are historically when visits related to tick bites are most prevalent. Prevention of tick bites is the best defense against Lyme disease. Wear light colored clothing, long sleeves and pants when in forested areas, use insect repellants that are federally regulated and contain DEET. When returning from the outdoors always check your clothing, body and pets for ticks.

KFL&A Respiratory: There is currently one influenza A and one respiratory outbreak of unknown origin occurring in local long-term care/retirement facilities.

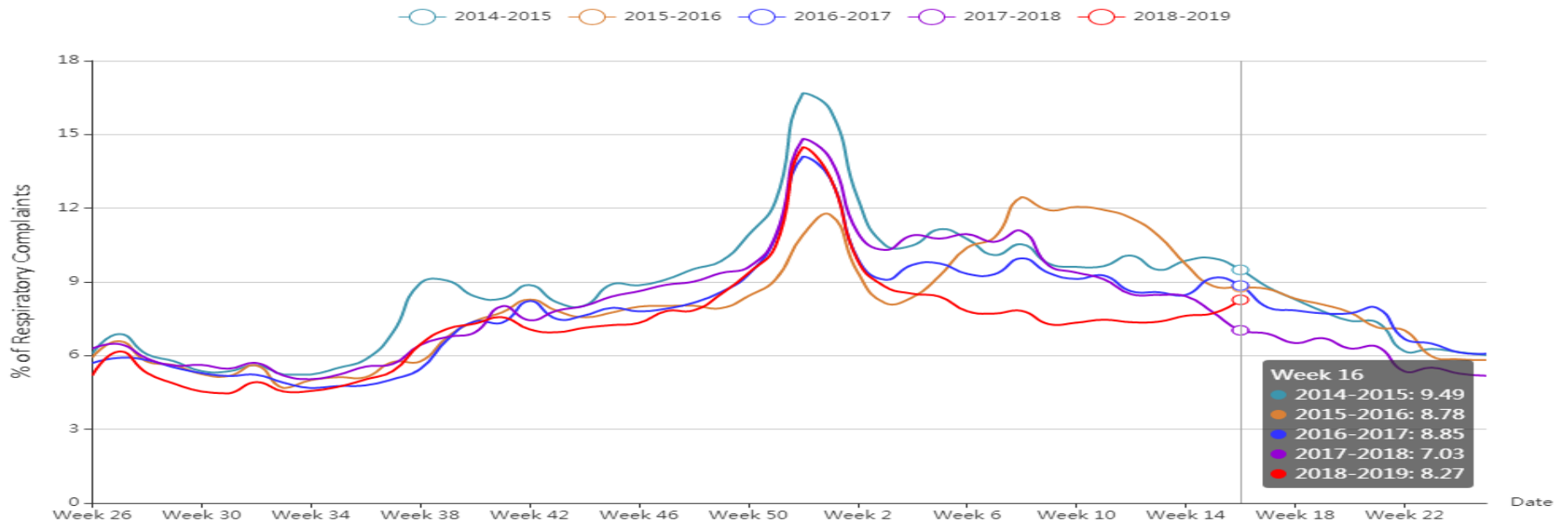
KFL&A Gastrointestinal: There is currently one enteric outbreak of unknown origin in a local long-term care/retirement facility.

Local Admissions of Interest

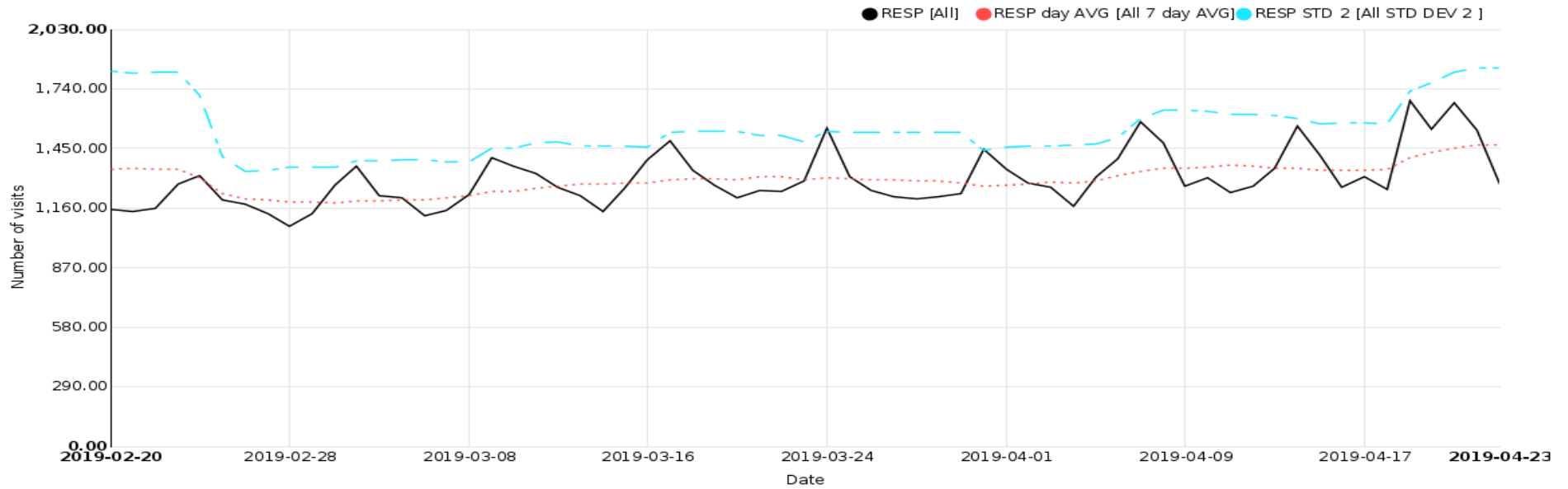
Date	Hospital	Reason for Admission
10/04/2019	KGH	QUERY INFLUENZA
11/04/2019	KGH	RESPIRATORY TRACT INFECTION
16/04/2019	KGH	OPIOID OVERDOSE
19/04/2019	KGH	OPIOID OVERDOSE
23/04/2019	KGH	OVERDOSE INGESTION

NOTE: Further details can be obtained by contacting KFL&A PHI staff at adam.vandijk@kflaph.ca or 613-549-1232 x1510 All feedback is welcome and appreciated.

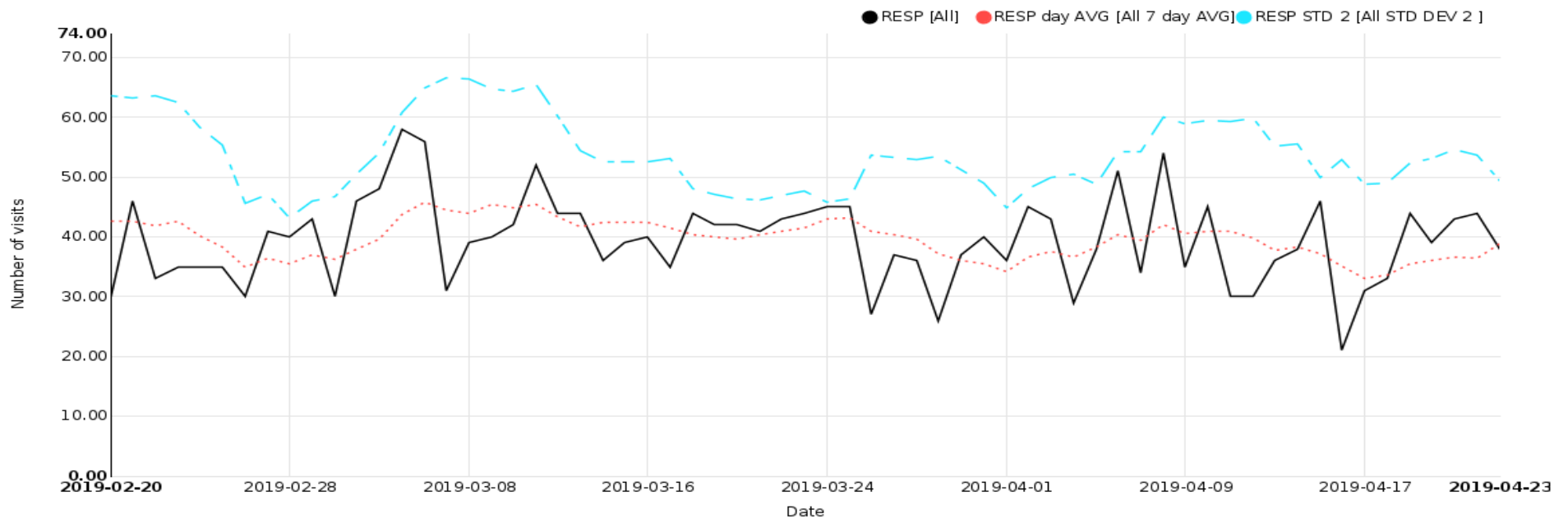
ED respiratory visits curve for Ontario hospital providing data to the ACES system along with previous year comparisons



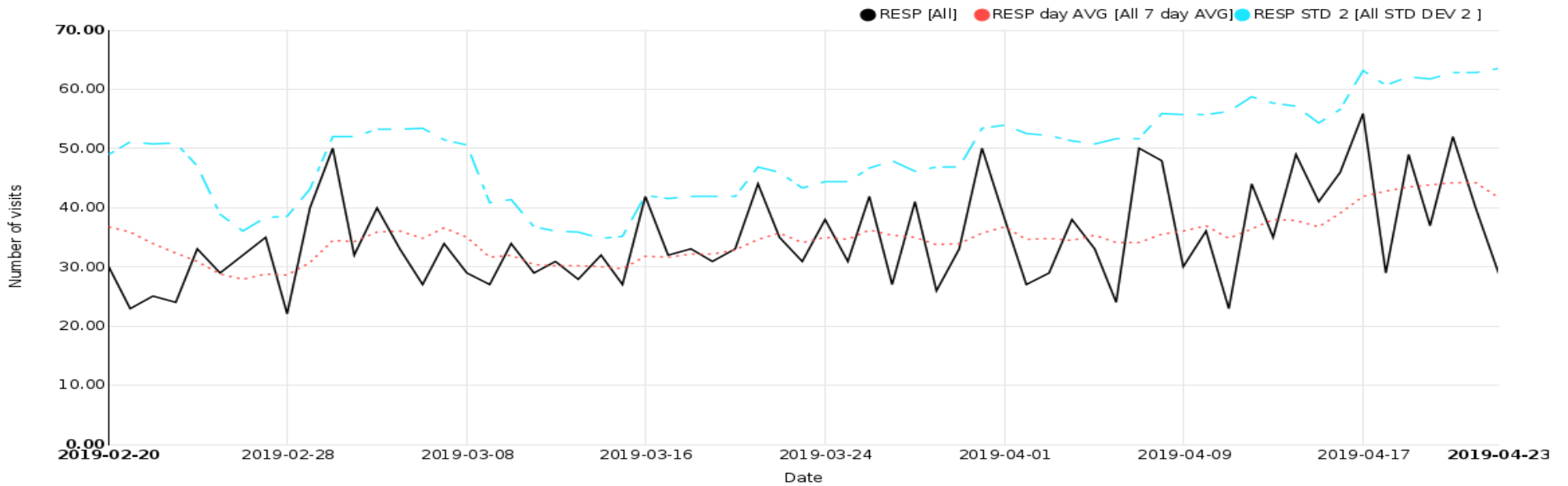
Respiratory ED Visits to Participating Ontario Hospitals



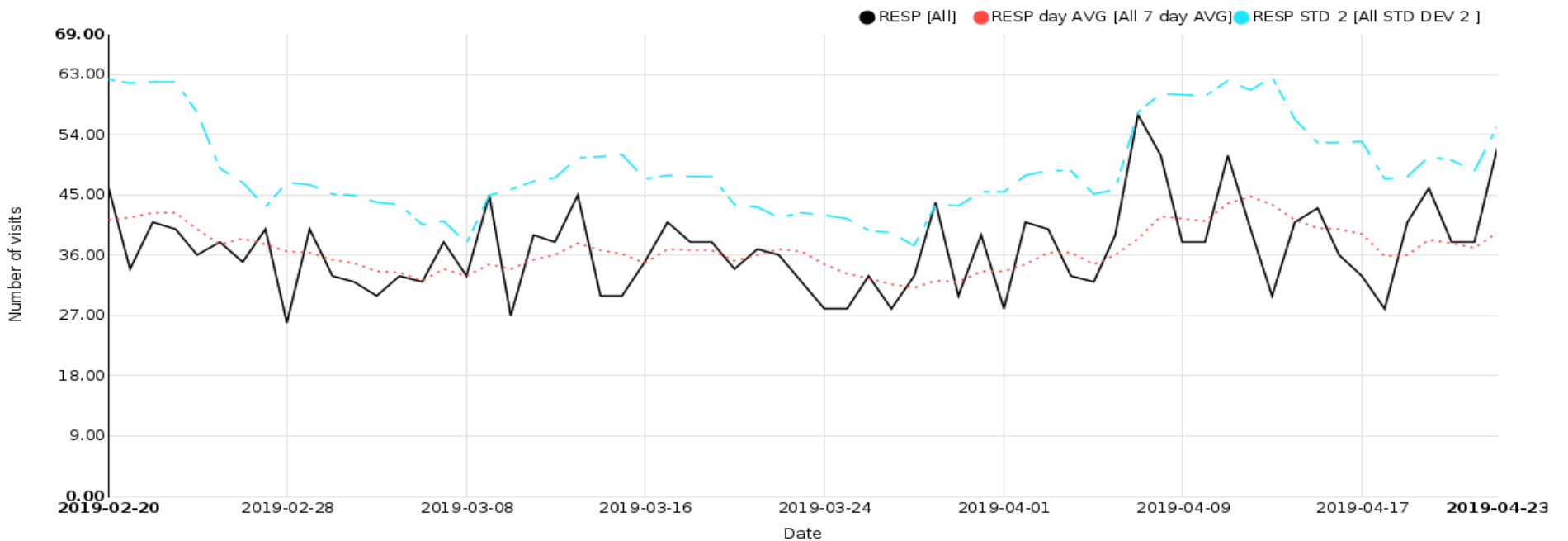
Respiratory ED Visits for KFL&A Health Unit



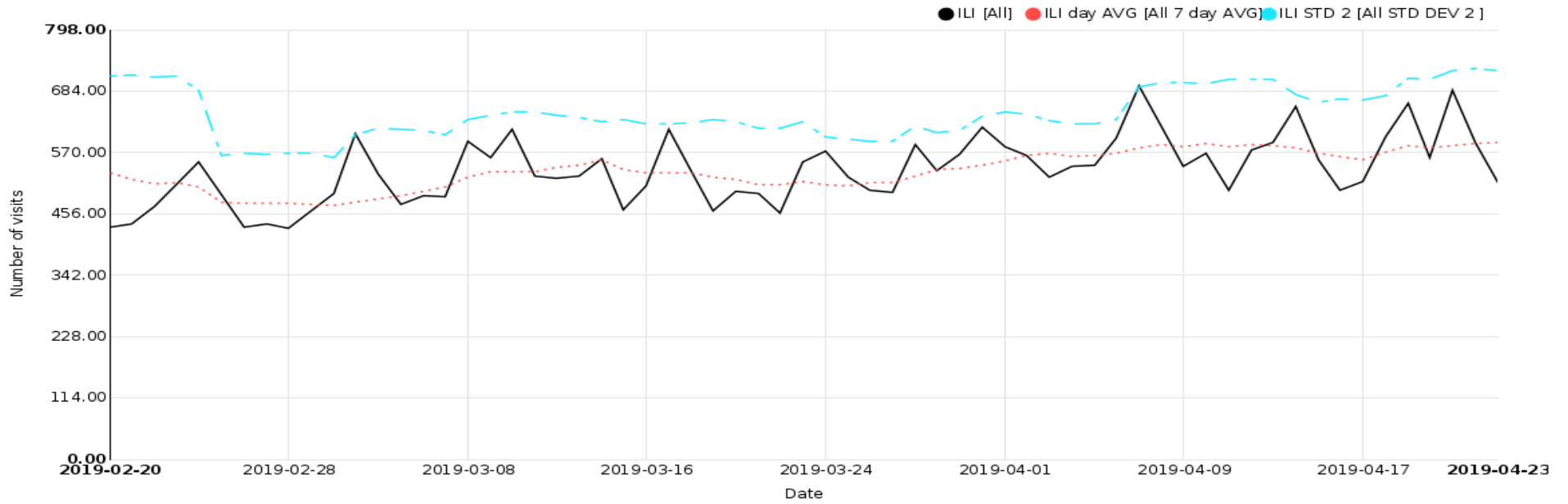
Respiratory ED Visits for HPE Health Unit



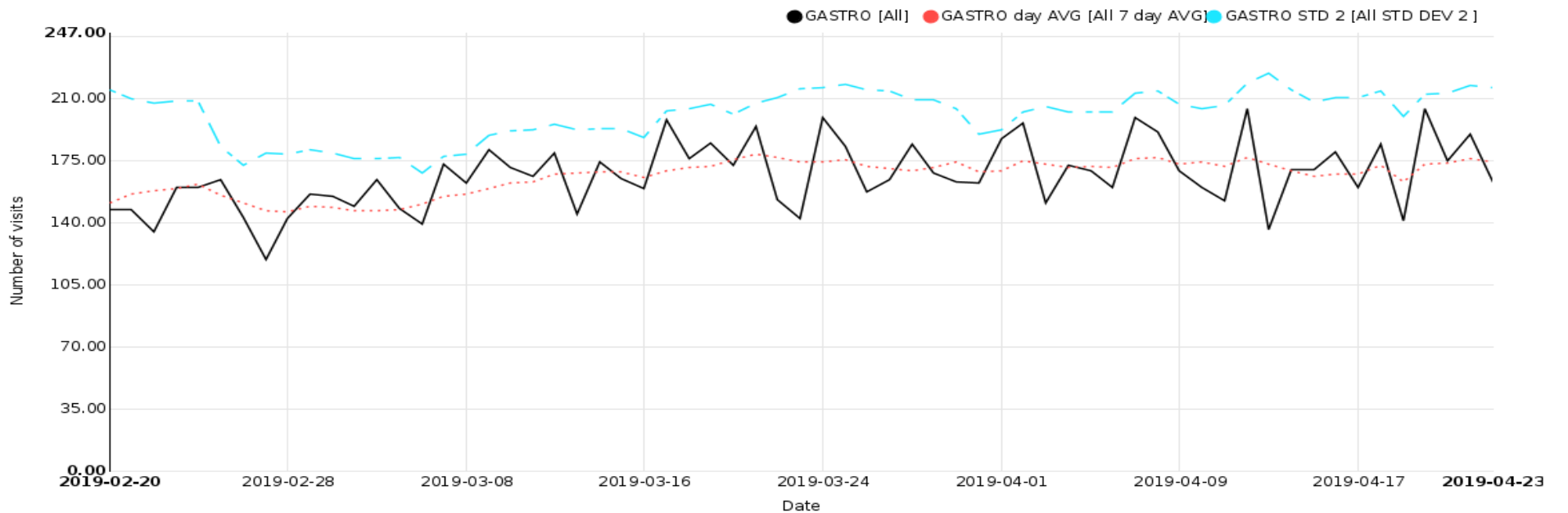
Respiratory ED Visits for LGL Health Unit



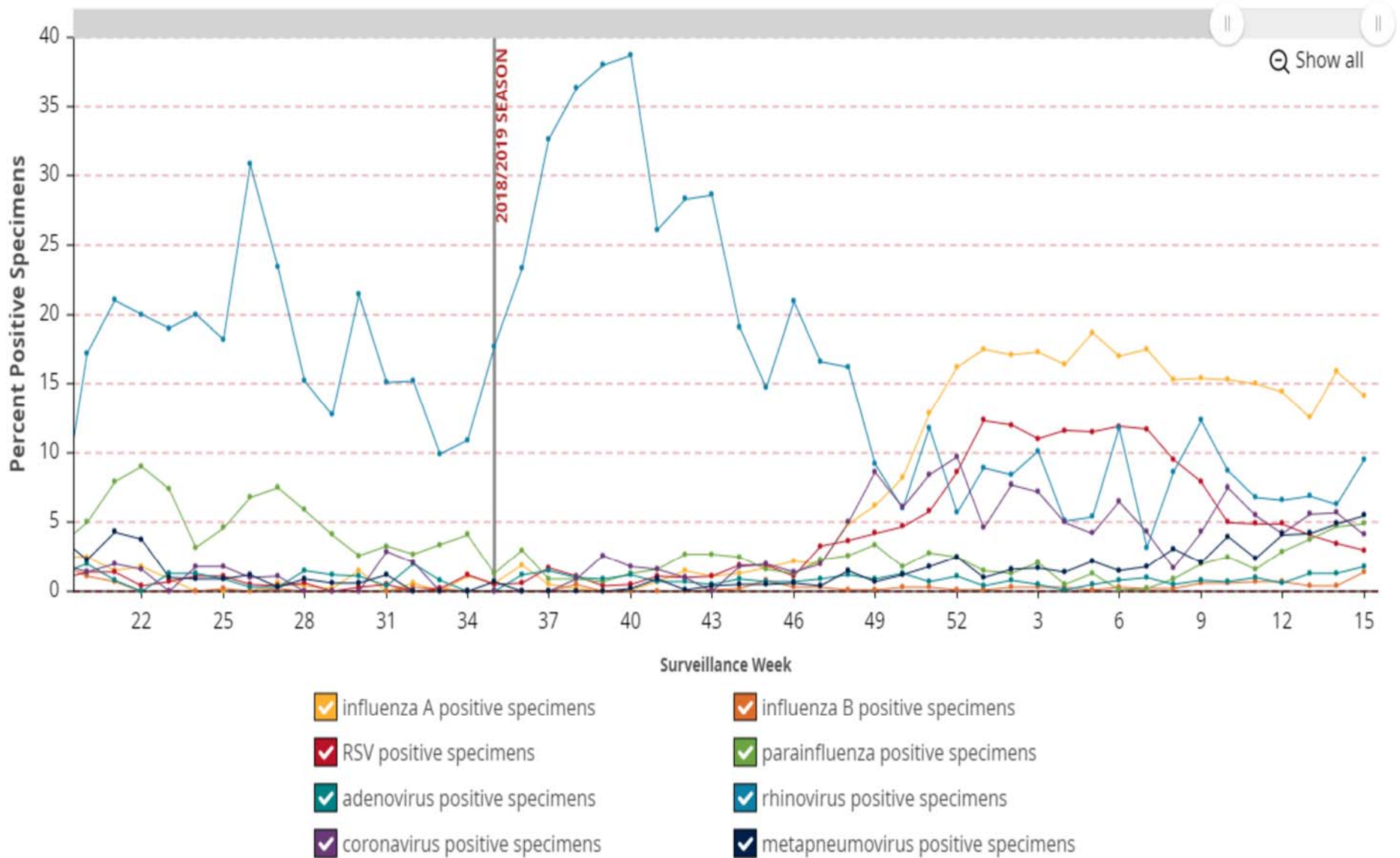
Influenza-Like Illness/Fever ED Visits to Participating Ontario Hospitals



Gastrointestinal ED Visits to Participating Ontario Hospitals



Percent positivity of specimens tested for all respiratory viruses by week



*Source: Ontario Respiratory Pathogen Bulletin, Public Health Ontario (with data obtained from the Public Health Agency of Canada's Respiratory Virus Detection tables)
Please review section 10 of the weekly pdf report for further information on the data sources used in the Ontario Respiratory Pathogen Bulletin.