

# Influenza-Like Illness (ILI) Mapper

## Board of Health Presentation

Adam van Dijk  
Communicable Disease Epidemiologist  
November 26, 2014

## Background

- ILI Mapper is based off of data from the Acute Care Enhanced Surveillance (ACES) system
- ACES is funded by the MOHLTC and currently collects triage data from over 100 hospitals covering 25 Health Units and 10 LHINs
- ACES currently monitors approximately 11,000 visits and 2,000 admissions per day, with these numbers continually rising as we add more hospitals to the system
- Patient chief complaints are data mined for key words and placed into syndrome categories by our system. ILI Mapper uses both our respiratory and fever/ILI syndrome to populate the website and to help us make informed decisions on respiratory activity for each HU we collect data from
- Previous work by our team has shown that monitoring respiratory data from our system can help give an early warning of influenza's pending seasonal arrival

## ILI Mapper Cut-Off's

Color scheme	Resp. related visits	Pneumo/ILI admits
Green	<10%	< 8%
Yellow	10 – 12.5%	8 – 10%
Orange	12.5 – 15%	10 – 12%
Red	> 15%	> 12%

-Cut-off's were created by Dr. Moore and myself prior to the 2013-2014 flu season based on a historical review and knowledge of respiratory trends in ACES

- Description's on ILI mapper were then constructed in collaboration with the Ministry

- Ontario based cut-off's were reviewed in October with decision to leave the cut-offs the same

- Recent additions over the past few weeks have seen our HU specific cut-off's published on the site and a real-time look at a HU's daily respiratory visit volume

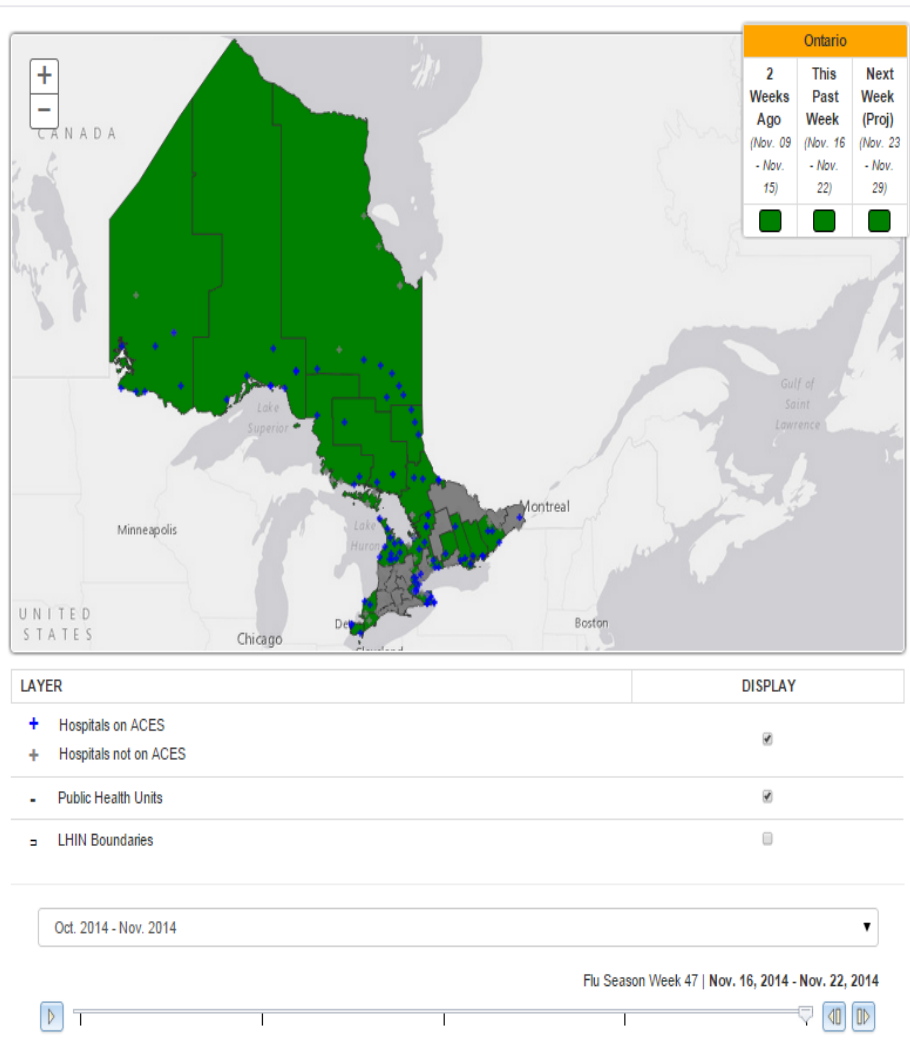
# ILI Mapper Demo

<http://aces.kflaphi.ca/iliMapper/>

# ONTARIO ILI ACTIVITY TRENDS

Weekly Influenza-Like Illness (ILI) Activity Level Indicator determined by data reported to the Acute Care Enhanced Surveillance (ACES) System supported by the Ministry of Health and Long Term Care and based at KFL&A Public Health.

[Click here](#) for a list of health unit and hospital partners.



About **Green** Yellow Orange Red Info

## Influenza-related activity is at low seasonal levels.

No significant increases in influenza activity are expected this week.

- No significant impacts in Ontario on the acute care or other sectors are anticipated this week associated with influenza virus activity.
  - Visits to emergency departments for complaints related to respiratory syndromes are expected to be less than 10% of total emergency department visit volume.
  - Admissions to hospitals for pneumonia or influenza-like-illness (ILI) are expected to be less than 8% of total emergency department admission volume.
- This week is a good opportunity to focus on influenza prevention activities including reviews of infection prevention & control measures such as hand hygiene strategies and the immunization of health workers and clients / patients / residents.

Individual Health Unit Color Coding Cut-Offs  
(Respiratory ER Visits as a Percentage of all ER Visits)

Health Unit	Green	Health Unit	Green
Peel (PEEL)	< 8	Toronto (TOR)	< 10
Grey Bruce (GBHU)	< 20	Hastings (HPE)	< 17.5
Durham (DRHU)	< 8	Leeds-Grenville (LGL)	< 22.5
Sudbury (SDHU)	< 8	Thunder Bay (TBPHU)	< 14
Chatham-Kent* (CKPHS)	< 15	Niagara (NPHU)	< 15
Porcupine (PHU)	< 20	North Bay (NBPHU)	< 20
Timiskaming (THU)	< 18	Northwestern (NWHU)	< 20
Algoma (APH)	< 16	Kingston (KFLA)	< 17.5
Hamilton (CHPHS)	< 14	Peterborough (PCCHU)	< 17.5
Lambton*(CLCHSD)	< 22.5	Simcoe-Muskoka (SMDHU)	< 15
Windsor-Essex*(WECHU)	< 10	Halton (HRHD)	< 12.5

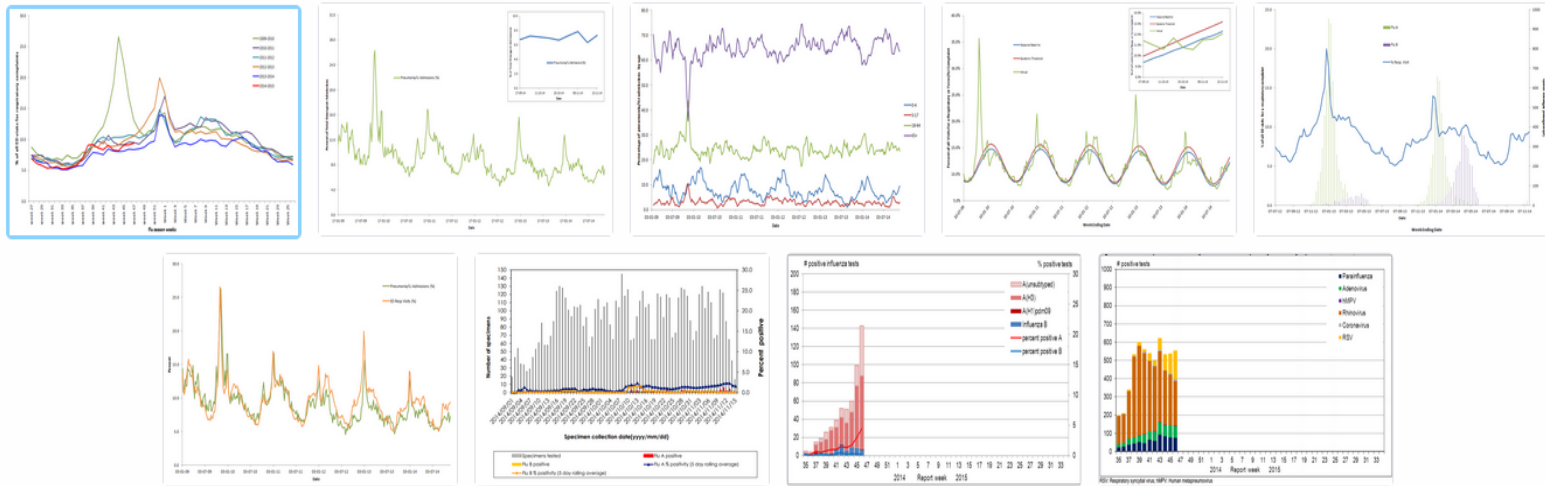
\* indicates values based on only one influenza season, cut-off values may be modified as more data become available

LAYER	DISPLAY
<input checked="" type="checkbox"/> Hospitals on ACES	<input checked="" type="checkbox"/>
<input checked="" type="checkbox"/> Hospitals not on ACES	<input checked="" type="checkbox"/>
<input checked="" type="checkbox"/> Public Health Units	<input checked="" type="checkbox"/>
<input type="checkbox"/> LHIN Boundaries	<input type="checkbox"/>

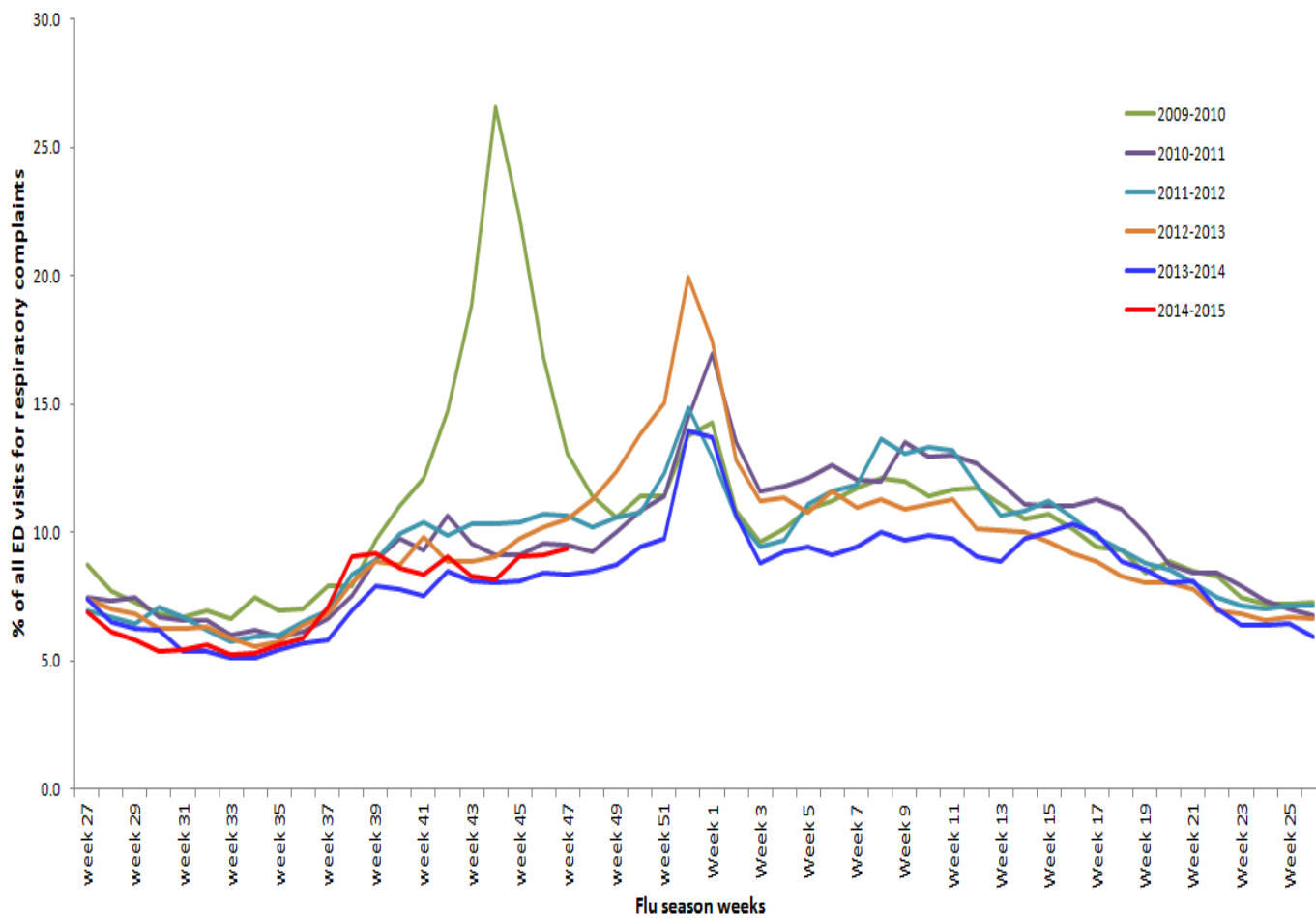
Oct. 2014 - Nov. 2014

Flu Season Week 47 | Nov. 16, 2014 - Nov. 22, 2014

The epidemic curves for the provincial summary of data are here:



1. ED respiratory visits curve for Ontario hospitals providing data to the ACES system along with previous year comparisons.



5. Comparison of ED respiratory visits and lab confirmed influenza cases for health units participating in the ACES system (Lab data source: Ontario Respiratory Virus Bulletin, Surveillance Services and Public Health Ontario Laboratories, Public Health Ontario)

